



## SIZES

Small (Medium, Large, XL, 2XL)

## MEASUREMENTS

**Bust:** 36¾ (40¼, 43¾, 47¼, 51)" [93.5 (102, 111, 120, 129.5) cm], buttoned  
**Length:** 21¼ (22½, 24, 25, 26¾)" [55 (57, 61, 63.5, 68) cm].

## MATERIALS

Sheep(ish)<sup>™</sup> by Vickie Howell (85 g/3 oz, 153 m/167 yds)

Sizes	S	M	L	XL	2XL
Magenta(ish) (00006)	5	5	6	7	8 balls

Size 5.5 mm (U.S. 9) circular knitting needle, 24" [60 cm] long, **or size needed to obtain gauge**. Set of 4 size 5.5 mm (U.S. 9) double-pointed knitting needles. Stitch markers. Stitch holders or waste yarn. 7 buttons, 1" [25 mm] diameter. Yarn needle.

## GAUGE

In Reverse Stocking stitch, 17 sts and 22 rows = 4" [10 cm].

## ABBREVIATIONS

**Garter Stitch** = Knit every row

**P1-f/b** = Purl next stitch, then purl it through back loop.

(1 stitch increased)

**Skp** = Slip 1 stitch knitwise, k1, pass slipped stitch over. (1 stitch decreased)

**Ssk** = Slip next 2 stitches, 1 at a time, to RH needle as if to knit, return stitches to LH needle in new orientation, knit 2 stitches together through back loop. (1 stitch decreased)

## INSTRUCTIONS

**Note:** Cardigan is worked in one piece from the top down.

**1x1 Rib** (multiple of 2 sts):

All Rows: \*K1, p1; rep from \* to end.

**Cascading Leaves Pattern** (panel of 14 sts):

**Note:** You may work pattern from text or Chart.

**Row 1 (RS):** K3, k2tog, k1, yo, p2, yo, k1, skp, k3.

**Row 2 and Every WS Row:** P6, k2, p6.

**Row 3:** K2, k2tog, k1, yo, k1, p2, k1, yo, k1, skp, k2.

**Row 5:** K1, k2tog, k1, yo, k2, p2, k2, yo, k1, skp, k1.

**Row 7:** K2tog, k1, yo, k3, p2, k3, yo, k1, skp.

**Row 8:** Rep Row 2.

Rep Rows 1-8 for Cascading Leaves Pattern.

**2x2 Rib** (multiple of 4 sts):

All Rows: \*K2, p2; rep from \* to end.

## YOKE

With circular needle, cast on 8 (10, 11, 12, 13) sts for Left Front, pm, 7 (8, 9, 10, 11) sts for Left Sleeve, pm, 20 (22, 24, 26, 28) sts for Back, pm, 7 (8, 9, 10, 11) sts for Right Sleeve, and 16 (16, 17, 18, 19) sts for Right Front—58 (64, 70, 76, 82) sts. Work in 1x1 Rib for 1" [2.5 cm], ending with a WS row.

## Shape Yoke

**Shaping Row (RS):** [Work in Rev St st to 1 st before marker, p1-f/b, slip marker, p1-f/b] 4 times, work in Rev St st to last 15 sts, work 14 sts of Cascading Leaves Pattern, p1—66 (72, 78, 84, 90) sts. Continuing to work patterns as established, rep Shaping Row every other row 23

(26, 29, 32, 35) times, ending with a WS row—250 (280, 310, 340, 370) sts [32 (37, 41, 45, 49) sts for Left Front, 55 (62, 69, 76, 83) sts each Sleeve, 68 (76, 84, 92, 100) sts for Back, 40 (43, 47, 51, 55) sts for Right Front].

## BODY

**Next Row (RS):** Purl to marker for Left Front, place next 55 (62, 69, 76, 83) sts on a st holder for Left Sleeve, removing markers, cast on 8 sts for underarm, purl across sts for Back, place next 55 (62, 69, 76, 83) sts on a st holder for Right Sleeve, removing markers, cast on 8 sts for underarm, work to end for Right Front—156 (172, 188, 204, 220) sts. Work even in patterns as established until piece measures 9 (9, 9½, 9½, 10)" [23 (23, 24.5, 24.5, 25.5) cm], from underarm, ending with a WS row.

**Next Row (RS):** Change to 2x2 Rib; work even for 2½" [6 cm]. Cast off all sts loosely in rib.

## SLEEVES

Transfer sts from st holder to dpns. Pick up and purl 8 sts from underarm sts, purl to end—63 (70, 77, 84, 91) sts. Join to work in the rnd; place marker at beginning of rnd. Purl 1 rnd, dec 3 (6, 5, 4, 7) sts evenly around—60 (64, 72, 80, 84) sts. Work in 2 x 2 Rib for 1" [2.5 cm]. Cast off all sts loosely in rib.

## FINISHING

**Button Band:** With RS facing, using circular needle, pick up and purl 3 sts for every 4 rows along Left Front. Work in Garter st for 2" [5 cm]. Cast off all sts loosely.

**Buttonhole Band:** Work as for Button Band until Band measures 1" [2.5 cm], ending with a WS row. Place markers for 7 buttons, the first and last 1" [2.5 cm] from top and bottom edge, and the remaining 5 evenly spaced between.

**Buttonhole Row (RS):** [Knit to marker, k2tog, (yo) twice, ssk] 7 times, knit to end. Complete as for Button Band. Using yarn needle, weave in ends. Sew on buttons.

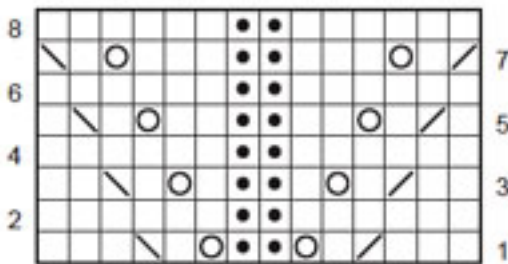
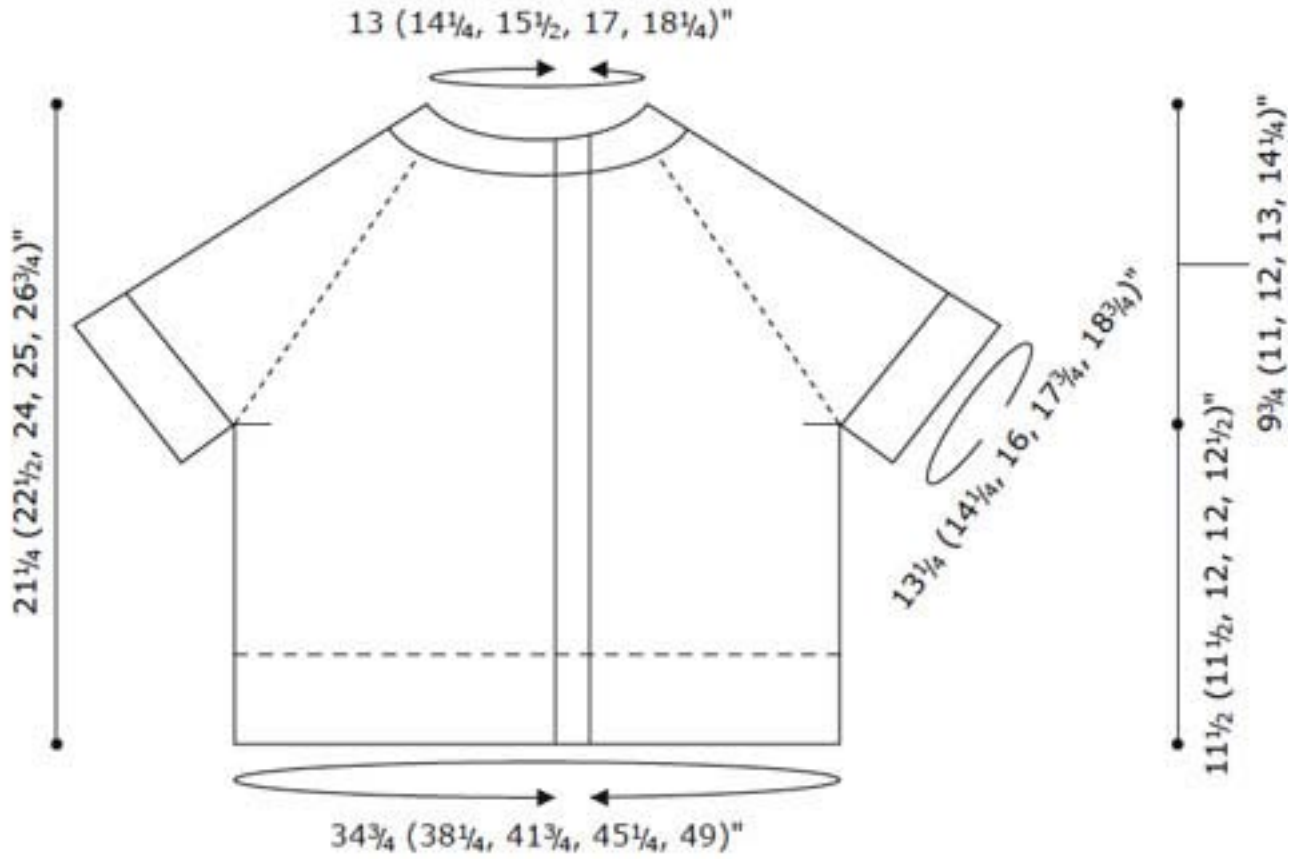
# SHEEP(ISH)

by **Vickie Howell**

TOPSIDE CARDI | Knit  
Designed by Vickie Howell



INTERMEDIATE



CASCADING LEAVES PATTERN

**LEGEND**

- Knit on RS, purl on WS
- Purl on RS, knit on WS
- Yo
- ↗ K2tog
- ↘ Skp