

Patons[®] Canadiana

Patons[®]
DECOR



STEGOSAURUS TOY

MEASUREMENT

Height: Approx 20 ins [51 cm]

MATERIALS

Patons Canadiana (100 g/3.5 oz)
or **Patons Décor** (100 g/3.5 oz)

Main Color (MC) (Aqua) 3 balls
Contrast A (Yellow) 2 balls
Contrast B (Royal) 1 ball
Contrast C (White) 1 ball
Contrast D (Black) 1 ball

Size 4 mm (U.S. 6) knitting needles **or**
size needed to obtain tension.
Stuffing.

TENSION

21 sts and 27 rows = 4 ins [10 cm] in
stocking st.

ABBREVIATIONS

M1 = make 1 st by picking up
horizontal loop lying before next st and
knitting into back of loop.
M1P = make 1 st by picking up
horizontal loop lying before next st and
purling into back of loop.

INSTRUCTIONS

Note: When working with more than 1 color within a row, wind small balls of the colors to be used, one for each separate area of color in the design. Start new colors at appropriate points. To change colors, twist the two colors around each other where they meet, on WS, to avoid a hole.

LEFT LEG

****Sole:** With A, cast on 6 sts and noting first row is RS, proceed in garter st (knit every row), inc 1 st each end of needle on 2nd and following 3 rows, then on following alt rows twice. 18 sts.

Cont even in garter st until work from beg measures 3½ ins [9 cm] ending with RS facing for next row. Break A. Join C and beg with a knit row, proceed in stocking st for 2 rows. Cont in stocking st, dec 1 st each end of needle on next and following alt rows twice more, then on next 3 rows. 6 sts. Cast off.

Top of Foot: With MC, cast on 29 sts. With C, cast on 28 sts. With MC, cast on 29 sts. 86 sts.

1st row: (RS). With MC, K29. With C, K28. With MC, K29.

2nd row: With MC, P29. (With C, P8. With MC, P2) twice. With C, P8. With MC, P29.

Shape toes: 3rd row: With MC, K29. (With C, Sl1. K1. pssso. K4. K2tog. With MC, K2) twice. With C, Sl1. K1. pssso. K4. K2tog. With MC, K29. 80 sts.

4th row: With MC, P28. M1P. P1. (With C, P2tog. P2. P2togtbl. With MC, P1. M1P. P1) 3 times. With MC, P27. 78 sts.



ABBREVIATIONS: www.patonsyarns.com/glossary

5th row: With MC, K29. M1. K1. [With C, Sl1. K1. pssso. K2tog. With MC, (K1. M1) twice. K1] twice. With C, Sl1. K1. pssso. K2tog. With MC, K1. M1. K29. 78 sts.

Break C and proceed with MC only.

6th row: P30. M1P. (P4. M1P. P3. M1P) twice. P4. M1P. P30. 84 sts.

Beg with a knit row, cont even in stocking st for 4 rows.

Shape ankle: Next row: (RS). K30. (K3tog) 8 times. K30. 68 sts.**

Beg with a purl row, cont even in stocking st for 3 rows, thus ending with RS facing for next row.

Next row: K19. Place marker in last st to mark position of Chart I. Knit to end of row.

Work a further 10 rows in stocking st, thus ending with WS facing for next row.

Shape thigh and tail opening:

Next row: Cast off 34 sts. Place marker in st left on needle after cast off. Purl to end of row. 34 sts.

Next row: (RS). Cast off 2 sts. K5 (including st left on needle after cast off). M1. K9. M1. K18. 34 sts.

Next row: Purl.

Next row: Cast off 2 sts. K4 (including st left on needle after cast off). M1. K10. M1. K18. 34 sts.

Next row: Purl.

Next row: Cast off 2 sts. K3 (including st left on needle after cast off). M1. K11. M1. K18. 34 sts.

Next row: Purl.

Next row: Cast off 2 sts. Knit to end of row. 32 sts.

Work 3 rows even, ending with RS facing for next row. Leave rem 32 sts on a spare needle.

RIGHT LEG

Work from ** to ** as given for Left Leg.

Beg with a purl row, work even in stocking st for 3 rows.

Next row: (RS). K49. Place marker in last st to mark position of Chart I. Knit to end of row.

Work a further 11 rows in stocking st, ending with RS facing for next row.

Shape thigh and tail opening:

Next row: Cast off 34 sts. Place marker in st left on needle after cast off. K18 (including st left on needle after cast off). M1. K9. M1. K7. 36 sts.

Next row: Cast off 2 sts. Purl to end of row. 34 sts.

Next row: K18. M1. K10. M1. K6. 36 sts.

Next row: Cast off 2 sts. Purl to end of row. 34 sts.

Next row: K18. M1. K11. M1. K5. 36 sts.

Next row: Cast off 2 sts. Purl to end of row. 34 sts.

Next row: K34.

Next row: Cast off 2 sts. Purl to end of row. 32 sts.

Work 2 rows even, ending with RS facing. Leave rem 32 sts on a spare needle.

TAIL

With MC, cast on 3 sts. With A, cast on 4 sts. With MC, cast on 3 sts. 10 sts.

1st row: (RS). With MC, K3. With A, K4. With MC, K3.

2nd row: With MC, P3. With A, P4. With MC, P3.

Rep last 2 rows twice more.

Next row: (RS). With MC, K2. M1. K1. With A, K1. M1. K2. M1. K1. With MC, K1. M1. K2. 14 sts.

Work 5 rows even (keeping colors as placed).

Next row: (RS). With MC, K3. M1. K1. With A, K1. M1. K4. M1. K1. With MC, K1. M1. K3. 18 sts.

Work 5 rows even (keeping colors as placed).

Next row: (RS). With MC, K4. M1. K1. With A, K1. M1. K6. M1. K1. With MC, K1. M1. K4. 22 sts.

Work 5 rows even (keeping colors as placed).

Cont inc 4 sts (as before) on next and following 6th rows until there are 34 sts. (9 sts in MC. 16 sts in A. 9 sts in MC).

Next row: (WS). With MC, P5. Place marker in last st to mark position of Chart II. P4. With A, P16. With MC, P5. Place marker in last st to mark position of Chart II. P4.

Work 4 rows even (keeping colors as placed).

Cont inc 4 sts (as before) on next and following 6th row. 42 sts. (11 sts in MC. 20 sts in A. 11 sts in MC).

Work 5 rows even.

Next row: (RS). With MC, (K5. M1) twice. K1. With A, K1. M1. K18. M1. K1. With MC, K1. (M1. K5) twice. 48 sts. Work 3 rows even (keeping colors as placed).

Next row: (RS). With MC, (K6. M1) twice. K1. With A, K22. With MC, K1. (M1. K6) twice. 52 sts.

Work 1 row even (keeping colors as placed).

Next row: With MC, K10. Place marker in last st to mark position of Chart II. K5. With A, K22. With MC, K6. Place marker in last st to mark position of Chart II. With MC, knit to end of row.

Work 1 row even (keeping colors as placed).

Next row: (RS). With MC, (K7. M1) twice. K1. With A, K22. With MC, K1. (M1. K7) twice. 56 sts.

Work 3 rows even (keeping colors as placed).

Next row: (RS). With MC, (K8. M1) twice. K1. With A, K22. With MC, K1. (M1. K8) twice. 60 sts.

Work 3 rows even (keeping colors as placed).

Next row: (RS). With MC, (K9. M1) twice. K1. With A, K22. With MC, K1. (M1. K9) twice. 64 sts.

Work 3 rows even (keeping colors as placed).

Keeping color placement correct, cast off 6 sts beg next 2 rows, then 5 sts beg following 6 rows. 22 sts.

Proceed as follows for Gusset:

GUSSET

With A, knit 1 row.

Cont in stocking st, shaping sides by dec 1 st at each end of next 4 rows, then on every following alt row until there are 6 sts.

Work 5 rows even, ending with RS facing for next row.

Inc 1 st each end of needle on next and every following alt row until there are 18 sts.

Work 1 row even.

Place a marker at each end of last row.

Work 2 rows even, ending with RS facing for next row.

Inc 1 st each end of next and following 4th row. 22 sts.

Work 9 rows even, ending with RS facing. Leave rem 22 sts on a spare needle.

UPPER BODY

With MC, K32 from Left Leg. With A, K22 from Gusset. With MC, K32 from Right Leg. 86 sts.

Purl 1 row (keeping colors as placed).

Next row: With MC, K31. With A, K2tog. M1. K20. M1. Sl1. K1. pss0. With MC, K31.

Purl 1 row (keeping colors as placed).

Next row: Cast on 2 sts. With MC, K32 (including cast on sts). With A, K2tog. M1. K22. M1. Sl1. K1. pss0. With MC, K30.

Next row: Cast on 2 sts. Purl to end of row (keeping colors as placed).

Next row: Cast on 2 sts. With MC, K33 (including cast on sts). With A, K2tog. M1. K24. M1. Sl1. K1. pss0. With MC, K31.

Next row: Cast on 2 sts. Purl to end of row (keeping colors as placed).

Next row: Cast on 2 sts. With MC, K34 (including cast on sts). With A, K2tog. M1. K26. M1. Sl1. K1. pss0. With MC, K32.

Next row: Cast on 2 sts. Purl to end of row (keeping colors as placed).

Next row: Cast on 2 sts. With MC, K35 (including cast on sts). With A, K2tog. M1. K28. M1. Sl1. K1. pss0. With MC, K33.

Next row: Cast on 2 sts. Purl to end of row (keeping colors as placed). 102 sts.

Next row: With MC, K34. With A, K2tog. M1. K30. M1. Sl1. K1. pss0. With MC, K34.

Purl 1 row (keeping colors as placed).

Next row: With MC, K10. Place a marker in last st to mark position of Chart I. K23. With A, K2tog. M1. K32. M1. Sl1. K1. pss0. With MC, K24. Place a marker in last st to mark position of Chart I. K9.

Work 5 rows even.

Next row: (RS). With MC, K30. K3tog. With A, K36. With MC, Sl1. K2tog. pss0. Knit to end of row.

Next row: With MC, P31. With A, P36. With MC, P31.

Next row: With MC, K28. K3tog. With A, K36. With MC, Sl1. K2tog. pss0. Knit to end of row.

Next row: With MC, P29. With A, P36. With MC, P29.

Cont in this manner, dec 2 sts at each side of color change until the row "**With MC, K20. K3tog. With A, K36. With MC, Sl1. K2tog. pss0. Knit to end of row**" has been worked. 78 sts.

Work 1 row even.

Next row: (RS). With MC, K21. With A, Sl1. K2tog. pss0. K30. K3tog. With MC, K21. 74 sts.

Purl 1 row (keeping colors as placed).

Next row: With MC, K19. K2tog. With A, Sl1. K1. pss0. K28. K2tog. With MC, Sl1. K1. pss0. K19. 70 sts.

Purl 1 row (keeping colors as placed).

Next row: With MC, K18. K2tog. With A, Sl1. K1. pss0. K26. K2tog. With MC, Sl1. K1. pss0. K18. 66 sts.

Purl 1 row (keeping colors as placed).

Cont in this manner, dec 1 st at each side of color change until the row "**With MC, K12. K2tog. With A, Sl1. K1. pss0. K14. K2tog. With MC, Sl1. K1. pss0. K12**" has been worked. 42 sts.

Purl 1 row (keeping colors as placed).

Next row: With MC, K6. Place marker in last st to mark position of Chart II. K7. With A, K16. With MC, K8. Place marker in last st to mark position of Chart II. K5.

Purl 1 row (keeping colors as placed).

Next row: With MC, K11. K2tog. With A, Sl1. K1. pss0. K12. K2tog. With MC, Sl1. K1. pss0. K11. 38 sts.

Work 3 rows even (keeping colors as placed).

Next row: With MC, K10. K2tog. With A, Sl1. K1. pss0. K10. K2tog. With MC, Sl1. K1. pss0. K10. 34 sts.

Work 3 rows even.

Next row: With MC, K9. K2tog. With A, K12. With MC, Sl1. K1. pss0. K9. 32 sts.

Work 3 rows even (keeping colors as placed).

Next row: With MC, K8. K2tog. With A, K12. With MC, Sl1. K1. pss0. K8. 30 sts.

Work 3 rows even (keeping colors as placed).

Next row: With MC, K7. K2tog. With A, K12. With MC, Sl1. K1. pss0. K7. 28 sts.

Work 3 rows even.

Shape neck: Next row: Pat across 14 sts. **Turn.** Leave rem sts on a spare needle.

Keeping colors as placed, cast off 2 sts beg next and following alt rows twice. 8 sts. Place a marker at beg of last row. Break A.

With MC only, dec 1 st at beg of next and following alt rows twice, then at same edge on next row. 4 sts. Cast off.

With RS of work facing, rejoin appropriate yarn to rem sts. Cast off 2 sts.

Pat to end of row. 12 sts. Work 1 row even. Cast off 2 sts beg next and following alt row. 8 sts. Work 1 row even, thus ending with RS facing for next row. Place a 2nd marker at end of last row. Break A.

With MC only, dec 1 st at end of next and following alt rows twice, then at same edge on next row. 4 sts. Cast off.

Sew cast off edges from both sides at top of head tog.

HEAD

With RS of work facing and MC, pick up and knit 8 sts up right side of neck from 2nd marker to seam at top of neck shaping, then 8 sts down left side of neck to 1st marker. 16 sts.

Beg with a purl row, work 3 rows in stocking st.

Shape eyes: Next row: (RS). K1. M1. K3. *(Knit into front, back and front of next st) 3 times. K2. Rep from * once more. K1. M1. K1. 30 sts.

Next row: P1. M1P. P15. Place a marker between last 2 sts to mark position of Chart III. P13. M1P. P1. 32 sts.

Next row: K1. M1. K30. M1. K1. 34 sts.

Next row: P1. M1P. P32. M1P. P1. 36 sts.

Next row: K8. *(K3tog) 3 times. K2. Rep from * once more. K6. 24 sts.

Work 11 rows even.

Shape nose: Next row: (RS). K6. (K3tog) 4 times. K6. 16 sts.

Next row: P16.

Next row: (K2tog) 8 times. 8 sts.

Next row: P8.

Place a marker in center of last row. Cast off.

ARMS (make 2)

With C, cast on 16 sts.

Purl 1 row. Place a marker in center of last row.

Next row: (RS). (Inc 1 st knitwise in next st) 16 times. 32 sts.

Next row: P32. Break C.

Next row: With A, K8. With MC, K16. With A, K8.

Next row: With A, P8. With MC, P16. With A, P8.

Rep last 2 rows twice more, ending with RS facing for next row. Place a marker in center of last row to mark beg of fingers.

Next row: With A, K1. K2tog. K2. K2tog. K1. With MC, K1. (K2tog. K2) 3 times. K2tog. K1. With A, K1. K2tog. K2. K2tog. K1. 24 sts.

Next row: With A, P6. With MC, P12. With A, P6.

Next row: With A, K6. With MC, K1. M1. K10. M1. K1. With A, K6. 26 sts.

Next row: With A, P6. With MC, P14. With A, P6.

Next row: With A, K6. With MC, K1. M1. K12. M1. K1. With A, K6. 28 sts.

Next row: With A, P6. With MC, P16. With A, P6.

Cont inc 2 sts (as before) on next and following alt row. 32 sts.

Work 1 row even, ending with RS facing for next row.

Next row: With A, K6. With MC, K10. Place marker in last st to mark position of Chart I. K10. With A, K6.

Work 1 row even.

Inc 2 sts (as before) on next and following 4th rows until there are 38 sts.

Work 11 rows even, ending with RS facing for next row.

Shape top: Keeping colors correct, cast off 3 sts beg next 2 rows. 32 sts.

Dec 1 st each end of next and following alt row. 28 sts.

Work 1 row even.

Dec 1 st at each end of next 6 rows.

Cast off rem 16 sts. Place a marker in center of last row.

FINISHING

With B, work Chart I on Legs, Upper Body and Arms in duplicate st using markers as a guide for chart placement.

With B, work Chart II on Upper Body and Tail in duplicate st using markers as a guide for chart placement. With C

and D, work Chart III on Head in duplicate st using markers as a guide for chart placement and noting that embroidery is worked in opposite direction to knitting by turning work

upside down. Duplicate st is worked over 2 adjacent half sts to form one

embroidered st.

Sew underseam of Head. Place nose end of Head seam to marker at cast-off edge and sew cast-off edges tog. With D, embroider nostrils and mouth as illustrated using outline st. Stuff eyes and secure in position to make eyes protrude. Sew shaped edges of Head to cast-off sts at Head shaping.

Sew back seams of each Leg. Sew Soles to base of Legs matching top of Soles to Toes of Legs. Sew Gusset to front of thighs, matching markers on Gusset to markers on Legs. Sew rem side edge of Gusset to cast-off sts of Legs.

Sew side seams of Arms: Sew cast-on edge of Arms, matching seam to marker. Stuff arms. With MC, work 3 running sts through all thicknesses at bottom of Arm to form fingers as illustrated. Sew Arms to each side of Body as illustrated.

Sew back seam of Body, leaving an opening to insert stuffing. Sew Tail seam. Sew Tail to Body. Stuff Toy and sew opening closed.

Tail Horns (make 4):

With MC, cast on 12 sts.

Knit 1 row. Break MC.

With C, beg with a knit row, proceed in stocking st for 2 rows. Dec 1 st each end of needle on next and following alt rows twice more. 6 sts. Dec 1 st each end of needle on following 4th row. 4 sts.

Work 3 rows even, thus ending with RS facing for next row. Break yarn leaving a long end. Draw end through rem sts and fasten securely. Sew side seam. Stuff horns and sew to end of Tail as illustrated.

Large Scales (make 6):

With B, cast on 9 sts.

1st row: (RS). K1. *P1. K1. Rep from * to end of row.

2nd row: P1. *K1. P1. Rep from * to end of row.

These 2 rows form (K1. P1) ribbing. Cont in (K1. P1.) ribbing, inc 1 st each end of next and every alt row until there are 13 sts.

Work 1 row even.

1st row: (RS). Sl1. K1. pssso. Rib to last 2 sts. K2tog.

2nd row: P2tog. Rib to last 2 sts. P2togtbl.

Rep last 2 rows once more, then 1st row once. 3 sts.

Next row: (WS). P3tog. Fasten off.

Medium Scales (make 6):

With B, cast on 5 sts and work in (K1. P1) ribbing as given for Large Scales for 2 rows.

Cont in (K1. P1.) ribbing, inc 1 st each end of next 3 rows. 11 sts.

Work 1 row even.

1st row: (RS). Sl1. K1. pssso. Rib to last 2 sts. K2tog.

2nd row: P2tog. Rib to last 2 sts. P2togtbl.

Rep last 2 rows once more. 3 sts.

Next row: (RS). Sl1. K2tog. pssso. Fasten off.

Small Scales (make 6):

With B, cast on 3 sts and work in (K1. P1) ribbing as given for Large Scales for 2 rows.

Cont in ribbing, inc 1 st each end of next 2 rows. 7 sts.

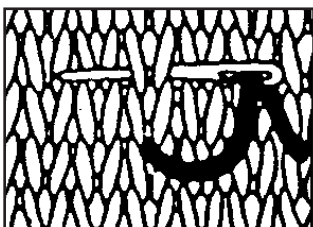
1st row: Sl1. K1. pssso. Rib to last 2 sts. K2tog.

2nd row: P2tog. Rib to last 2 sts. P2togtbl. 3 sts.

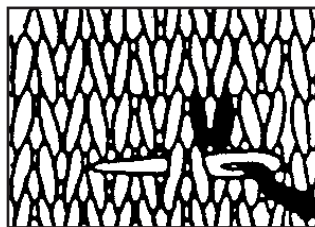
3rd row: Sl1. K2tog. pssso. Fasten off.

Sew Scales in position as illustrated.

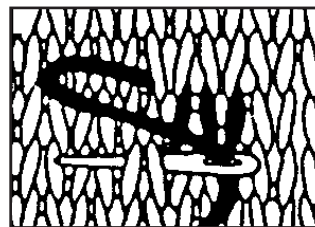
DUPLICATE STITCH



Bring needle up through centre of stitch from back of work and * insert from right to left behind stitch immediately above.

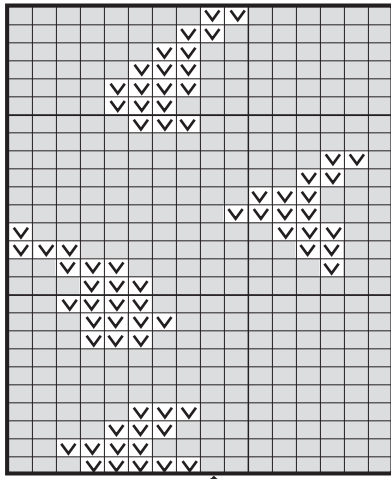


Bring needle down through center of original stitch and out through center of next stitch to be worked.



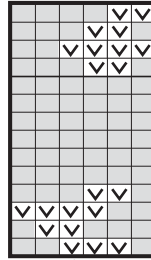
Repeat from * to continue.

CHART I



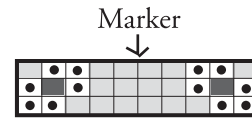
Marked St

CHART II







Marked St

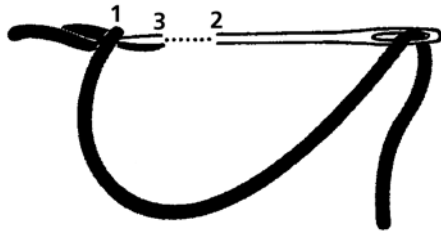
CHART III



Key

-  = MC (Aqua)
-  = Contrast B (Royal)
-  = Contrast C (White)
-  = Contrast D (Black)

OUTLINE STITCH



Patons

... a part of your life.

P.O. Box 40, Listowel ON N4W 3H3