



## DINOSAURS BLANKET

### MEASUREMENTS

Approx 37 x 52 ins [94 x 132 cm]  
point to point

### MATERIALS

**Patons Canadiana** (100 g/3.5 oz)  
or **Patons Décor** (100 g/3.5 oz)

<b>Contrast A</b> (Aqua)	2	balls
<b>Contrast B</b> (Orange)	2	balls
<b>Contrast C</b> (Royal)	2	balls
<b>Contrast D</b> (Yellow)	1	ball
<b>Contrast E</b> (Purple)	3	balls
<b>Contrast F</b> (Lilac)	1	ball
<b>Contrast G</b> (White)	1	ball
<b>Contrast H</b> (Black)	1	ball

Sizes 4.5 mm (U.S. 7) knitting needles.  
Size 4.5 mm (U.S. 7) circular knitting  
needle 36 ins [90 cm] long **or size  
needed to obtain tension.**

### TENSION

20 sts and 26 rows = 4 ins [10 cm] in  
stocking st.

### INSTRUCTIONS

**Note:** When working from charts, wind small balls of the colors to be used, one for each separate area of color in the design. Start new colors at appropriate points. To change colors, twist the two colors around each other where they meet, on WS, to avoid a hole. Small areas of color in charts may be worked using duplicate st if desired.

#### PANEL A

With A, cast on 45 sts.  
Work Chart I in stocking st to end of chart reading **knit** rows from **right** to left and **purl** rows from **left** to right.  
With E, work 2 rows stocking st.  
With G, work 2 rows stocking st.  
Rep last 4 rows 14 times more.  
With E, work 2 rows stocking st.  
Work Chart II in stocking st to end of chart reading **knit** rows from **right** to left and **purl** rows from **left** to right.  
With D, work 2 rows stocking st.  
With G, work 2 rows stocking st.

Rep last 4 rows 14 times more.  
With D, work 2 rows stocking st.  
Cast off.

#### PANEL B

With D, cast on 45 sts.  
With D, work 2 rows stocking st.  
With G, work 2 rows stocking st.  
Rep last 4 rows 14 times more.  
With D, work 2 rows stocking st.  
Work Chart II in stocking st to end of chart reading **knit** rows from **right** to left and **purl** rows from **left** to right.  
With C, work 2 rows stocking st.  
With G, work 2 rows stocking st.  
Rep last 4 rows 14 times more.  
With C, work 2 rows stocking st.  
Work Chart I in stocking st to end of chart reading **knit** rows from **right** to left and **purl** rows from **left** to right.  
Cast off.

#### PANEL C

With B, cast on 45 sts.  
Work Chart II in stocking st to end of chart reading **knit** rows from **right** to left and **purl** rows from **left** to right.

 **Patons**<sup>®</sup>  
**Canadiana**

 **Patons**<sup>®</sup>  
**DECOR**



ABBREVIATIONS: [www.patonsyarns.com/glossary](http://www.patonsyarns.com/glossary)

With C, work 2 rows stocking st.  
 With G, work 2 rows stocking st.  
 Rep last 4 rows 14 times more.  
 With C, work 2 rows stocking st.  
 Work Chart I in stocking st to end of chart reading **knit** rows from **right** to left and **purl** rows from **left** to right.  
 With E, work 2 rows stocking st.  
 With G, work 2 rows stocking st.  
 Rep last 4 rows 14 times more.  
 With E, work 2 rows stocking st.  
 Cast off.

Sew Panels tog from left to right, A, B, C, as illustrated.

**Top Edging:** With RS of Blanket facing, circular needle and C, pick up and knit 127 sts evenly across top of Blanket. Work 2 ins [5 cm] in garter st (knit every row), ending with WS facing. Cast off knitwise.

**Right Side Edging:** With RS of Blanket facing, circular needle and A, pick up and knit 186 sts evenly along right side of Blanket (including side of Top Edging). Work 2 ins [5 cm] in garter st, ending with WS facing. Cast off knitwise.

**Bottom Edging:** With RS of Blanket facing, circular needle and C, pick up and knit 136 sts evenly across bottom of Blanket (including side of Right Side Edging). Work 2 ins [5 cm] in garter st, ending with WS facing. Cast off knitwise.

**Left Side Edging:** With RS of Blanket facing, circular needle and A, pick up and knit 195 sts evenly along left side of Blanket (including sides of Top and Bottom Edgings). Work 2 ins [5 cm] in garter st, ending with WS facing. Cast off knitwise.

**Top or Bottom Spike Edging** (make 2 alike): With E, cast on 7 sts.

**1st row:** (RS). K5. yfwd. K2. 8 sts.

**2nd and alt rows:** Knit.

**3rd row:** K5. yfwd. K3. 9 sts.

**5th row:** K5. yfwd. K4. 10 sts.

**7th row:** K5. yfwd. K5. 11 sts.

**9th row:** K5. yfwd. K6. 12 sts.

**11th row:** K5. yfwd. K7. 13 sts.

**13th row:** K5. yfwd. K8. 14 sts.

**15th row:** K5. yfwd. K9. 15 sts.

**17th row:** K5. yfwd. K10. 16 sts.

**19th row:** K5. yfwd. K11. 17 sts.

**21st row:** K5. yfwd. K12. 18 sts.

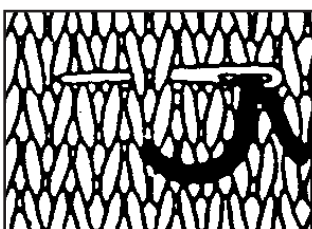
**22nd row:** Cast off 11 sts. K7 (including st on needle after cast off). 7 sts.

These 22 rows form Spike Edging pat.

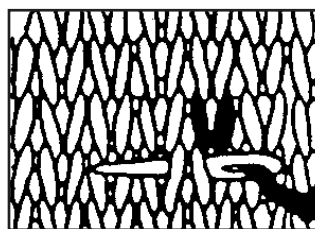
Cont in pat until Edging (when slightly stretched) measures length to fit across top or bottom of Blanket, ending on a 22nd row of pat. Cast off all sts. Sew Edging in position.

**Side Spike Edging** (make 2 alike): Work as given for Top or Bottom Spike Edging until Edging (when slightly stretched) measures length to fit along side of Blanket beg in center of side of Top Spike Edging and ending in center of side of Bottom Spike Edging. Sew Edging in position.

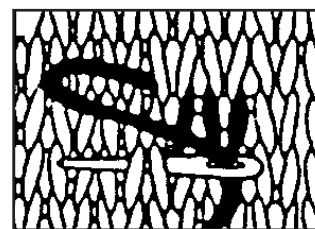
### DUPLICATE STITCH



Bring needle up through centre of stitch from back of work and \* insert from right to left behind stitch immediately above.

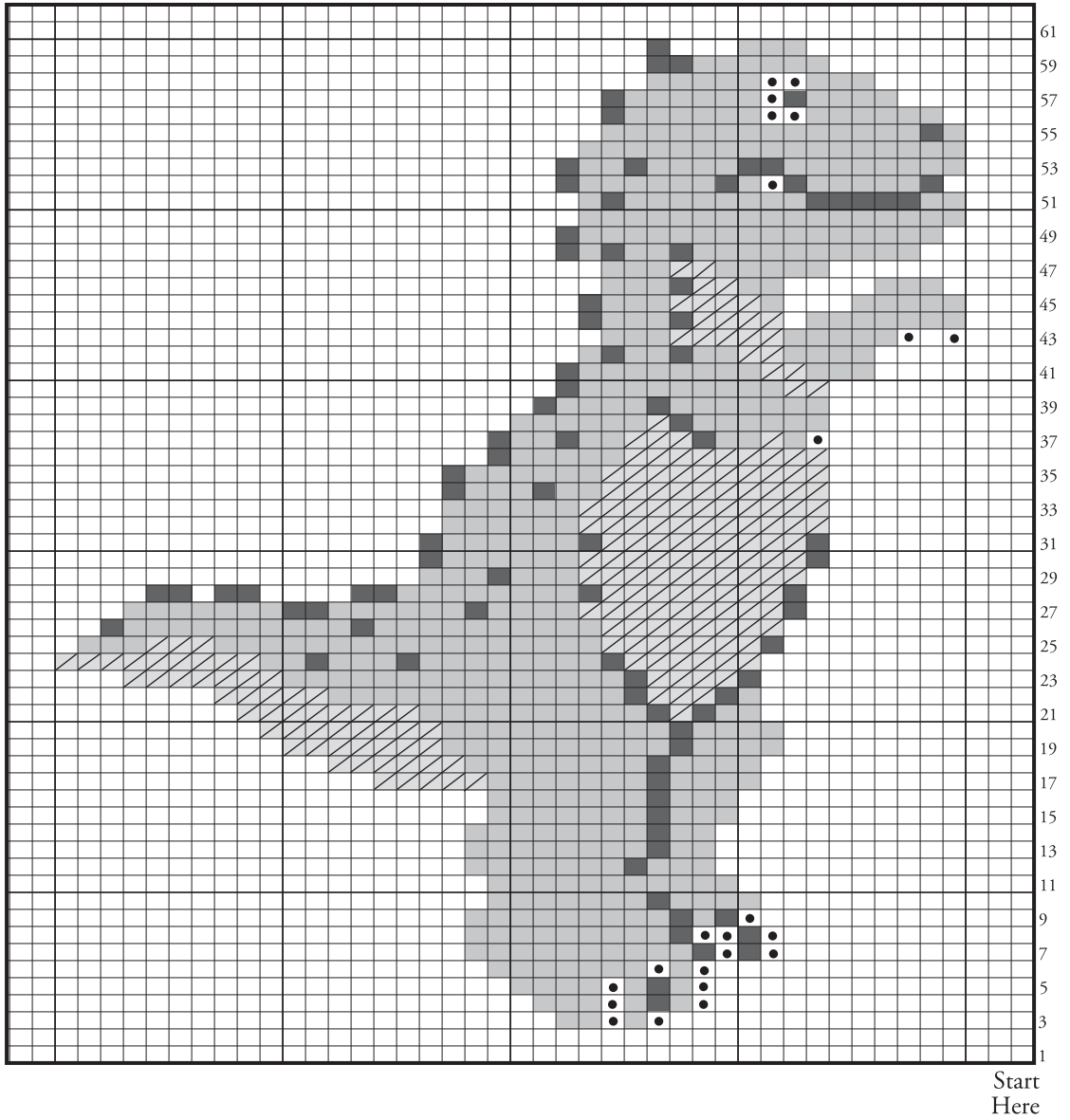


Bring needle down through center of original stitch and out through center of next stitch to be worked.








Repeat from \* to continue.

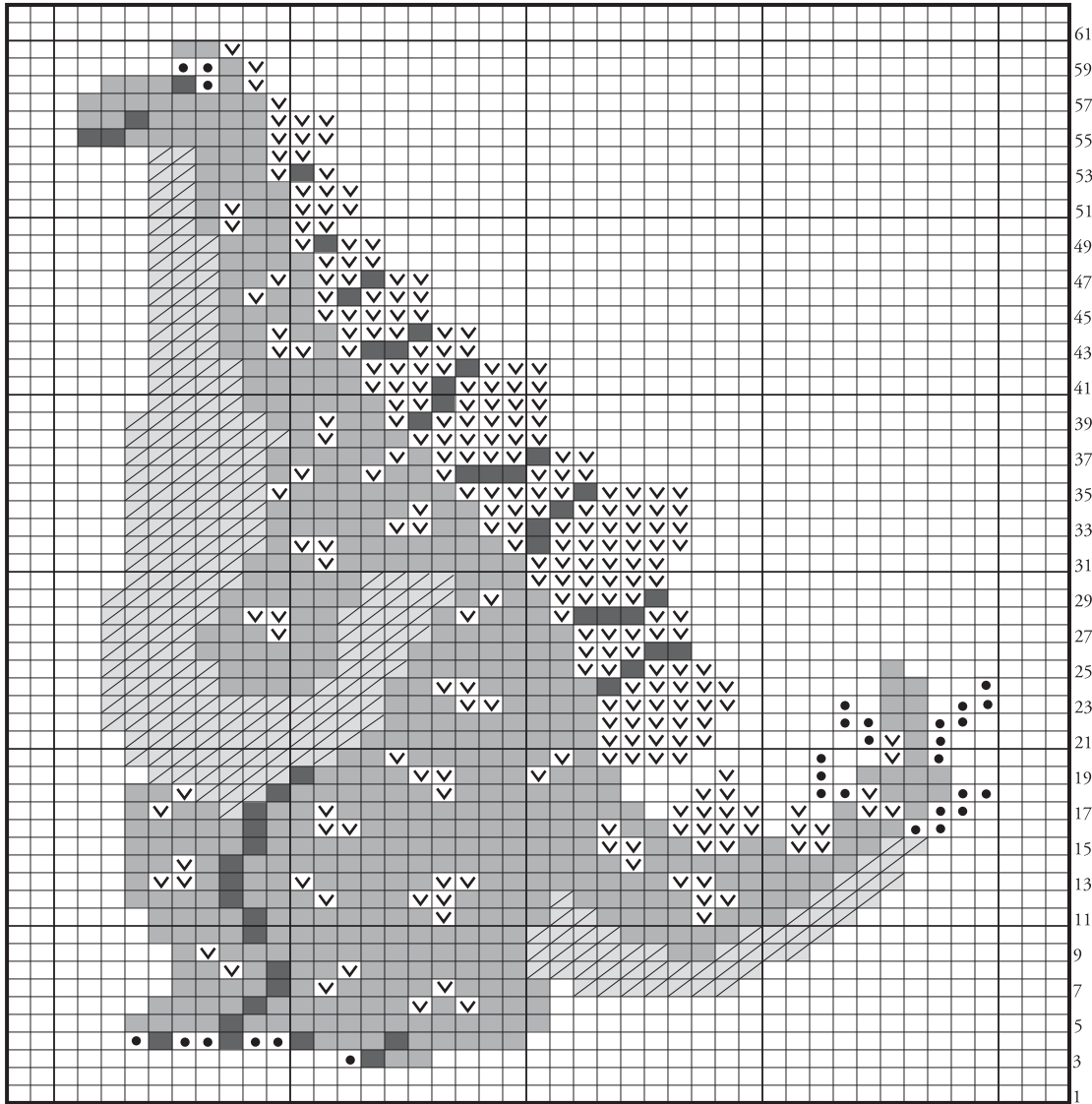
# CHART I



## Key







-  = Contrast A (Aqua)
-  = Contrast E (Purple)
-  = Contrast F (Lilac)
-  = Contrast G (White)
-  = Contrast H (Black)

# CHART II



Start  
Here

## Key

-  = Contrast B (Orange)
-  = Contrast A (Aqua)
-  = Contrast C (Royal)
-  = Contrast D (Yellow)
-  = Contrast G (White)
-  = Contrast H (Black)

 **Patons**

*... a part of your life.*

P.O. Box 40, Listowel ON N4W 3H3