

Patons
Classic Wool

Patons
DECOR



SHAWL-COLLAR JACKET (ADULTS)

SIZES

Bust measurement

Small	30-32	ins [76-81	cm]
Medium	34-36	ins [86.5-91.5	cm]
Large	38-40	ins [97-102	cm]
Extra-Large	42-44	ins [107-112	cm]

Finished bust

Small	44	ins [112	cm]
Medium	46	ins [117	cm]
Large	49	ins [124.5	cm]
Extra-Large	51	ins [129.5	cm]

MATERIALS

Patons Classic Wool (100 g/3.5 oz)
or **Patons Décor** (100 g/3.5 oz)

Size	S	M	L	XL
	11	12	13	14 balls

Sizes 4 mm (U.S. 6) and 5 mm (U.S. 8) knitting needles and size 4 mm (U.S. 6) circular knitting needle 36 ins [90 cm] long **or size needed to obtain tension.** Cable needle. 2 st holders. 7 buttons

TENSION

18 sts and 24 rows = 4 ins [10 cm] in stocking st with larger needles.

ABBREVIATIONS

KB1 = knit into back of next st.

PB1 = purl into back of next st.

T2BP = slip next st onto cable needle and leave at back of work. K1, then P1 from cable needle.

T2B = slip next st onto cable needle and leave at back of work. K1, then K1 from cable needle.

T2FP = slip next st onto cable needle and leave at front of work. P1, then K1 from cable needle.

C6B = slip next 3 sts onto cable needle and leave at back of work. K3, then K3 from cable needle.

C6F = slip next 3 sts onto cable needle and leave at front of work. K3, then K3 from cable needle.

PANEL PAT A (worked over 11 sts).

1st row: (RS). P1. K9. P1.

2nd and alt rows: K1. P9. K1.

3rd row: P1. C6B. K3. P1.

5th row: As 1st row.

7th row: P1. K3. C6F. P1.

8th row: As 2nd row.

These 8 rows form panel pat A.

PANEL PAT B (worked over 28 sts).

1st row: (RS). P5. T2B. (P6. T2B) twice. P5.

2nd row: K5. P2. (K6. P2) twice. K5.

3rd row: P4. (T2BP. T2FP. P4) 3 times.

4th row: K4. (P1. K2. P1. K4) 3 times.

5th row: P3. (T2BP. P2. T2FP. P2) 3 times. P1.

6th row: K3. (P1. K4. P1. K2) 3 times. K1.

7th row: P2. (T2BP. P4. T2FP) 3 times. P2.

8th row: K2. P1. (K6. P2) twice. K6. P1. K2.

9th row: P2. K1. (P6. T2B) twice. P6. K1. P2.

10th row: As 8th row.

11th row: P2. (T2FP. P4. T2BP) 3 times. P2.

12th row: As 6th row.

13th row: P3. (T2FP. P2. T2BP. P2) 3 times. P1.

14th row: As 4th row.

15th row: P4. (T2FP. T2BP. P4) 3 times.

16th row: As 2nd row.

These 16 rows form panel pat B.

INSTRUCTIONS

The instructions are written for smallest size. If changes are necessary for larger sizes, the instructions will be written thus: ().

BACK

With smaller needles cast on 109 (113-121-125) sts.

1st row: (RS). *K1. P1. Rep from * to last st. K1.



ABBREVIATIONS: www.patonsyarns.com/glossary

2nd row: P1. *K1. P1. Rep from * to end of row.

Rep these 2 rows (K1. P1) ribbing 3 times more, inc 20 sts evenly across last row. 129 (133-141-145) sts

Change to larger needles and proceed in pat as follows:

1st row: (RS). (K1. P1) 2 (3-5-6) times. P1. KB1. Work 1st row panel pat A. KB1. Work 1st row panel pat B. (KB1. Work 1st row panel pat A) 3 times. KB1. Work 1st row panel pat B. KB1. Work 1st row panel pat A. KB1. P1. (P1. K1) 2 (3-5-6) times.

2nd row: (P1. K1) 2 (3-5-6) times. K1. PB1. Work 2nd row panel pat A. PB1. Work 2nd row panel pat B. (PB1. Work 2nd row panel pat A) 3 times. PB1. Work 2nd row panel pat B. PB1. Work 2nd row panel pat A. PB1. K1. (K1. P1) 2 (3-5-6) times.

3rd row: (P1. K1) 2 (3-5-6) times. P1. KB1. Work 3rd row panel pat A. KB1. Work 3rd row panel pat B. (KB1. Work 3rd row panel pat A) 3 times. KB1. Work 3rd row panel pat B. KB1. Work 3rd row panel pat A. KB1. P1. (K1. P1) 2 (3-5-6) times.

4th row: (K1. P1) 2 (3-5-6) times. K1. PB1. Work 4th row panel pat A. PB1. Work 4th row panel pat B. (PB1. Work 4th row panel pat A) 3 times. PB1. Work 4th row panel pat B. PB1. K1. (P1. K1) 2 (3-5-6) times.

These 4 rows form pat. Panel pats A and B are now in position.

Cont in pat, keeping cont of panel pats until work from beg measures 22½ (23½-25-25½) ins [57 (59.5-63.5-65) cm] ending with RS facing for next row.

Shape raglans: Keeping cont of pat, cast off 4 sts beg next 2 rows. 121 (125-133-137) sts.

1st row: (RS). K1. Sl1. K1. pssso. Pat to last 3 sts. K2tog. K1.

2nd row: K1. P2tog. Pat to last 3 sts. P2togtbl. K1.

3rd row: As 1st row.

4th row: K1. P1. Pat to last 2 sts. P1. K1. Rep last 4 rows 11 (12-14-15) times more. 49 (47-43-41) sts.

Sizes S, M and L only: Next row: K1. Sl1. K1. pssso. Pat to last 3 sts. K2tog. K1.

Next row: K1. P1. Pat to last 2 sts. P1. K1. Rep last 2 rows 4 (3-0) time(s) more. 39 (39-41) sts.

Size XL only: Next row: K1. P1. Pat to last 2 sts. P1. K1.

All Sizes: Cast off rem 39 (39-41-41) sts.

POCKET LININGS (Make 2)

With larger needles cast on 27 sts. Work 5 ins [12.5 cm] in stocking st, ending with RS facing for next row and inc 1 st in center of last row. 28 sts. Leave these sts on a spare needle.

LEFT FRONT

**With smaller needles cast on 53 (57-61-63) sts.

Work 8 rows in (K1. P1) ribbing as given for Back, inc 8 (6-6-6) sts evenly across last row. 61 (63-67-69) sts.**

Change to larger needles and proceed in pat as follows:

1st row: (RS). (K1. P1) 2 (3-5-6) times. P1. KB1. Work 1st row panel pat A. KB1. Work 1st row panel pat B. KB1. Work 1st row panel pat A. KB1. P2.

2nd row: K2. PB1. Work 2nd row panel pat A. PB1. Work 2nd row panel pat B. PB1. Work 2nd row panel pat A. PB1. K1. (K1. P1) 2 (3-5-6) times.

3rd row: (P1. K1) 2 (3-5-6) times. P1. KB1. Work 3rd row panel pat A. KB1. Work 3rd row panel pat B. KB1. Work 3rd row panel pat A. KB1. P2.

4th row: K2. PB1. Work 4th row panel pat A. PB1. Work 4th row panel pat B. PB1. Work 4th row panel pat A. PB1. K1. (P1. K1) 2 (3-5-6) times.

These 4 rows form pat. Panel pats A and B are now in position.

Cont in pat, keeping cont of panel pats until work from beg measures 13½ ins [34.5 cm] ending with RS facing for next row.

Place Pocket: Next row: Pat across 5 (7-11-13) sts. Slip next 28 sts onto a st holder. Pat across 28 sts from pocket lining. Pat to end of row.

Cont in pat, keeping cont of panel pats until work from beg measures 22½ (23½-25-25½) ins [57 (59.5-63.5-65) cm] ending with RS facing for next row.

Shape raglan: Keeping cont of pat, cast off 4 sts beg next row. 57 (59-63-65) sts. Work 1 row even in pat.

1st row: (RS). K1. Sl1. K1. pssso. Pat to end of row.

2nd row: Pat to last 3 sts. P2togtbl. K1.

3rd row: As 1st row.

4th row: Pat to last 2 sts. P1. K1.

Rep last 4 rows 4 times more. 42 (44-48-50) sts.

Shape front: 1st row: K1. Sl1. K1. pssso. Pat to last 2 sts. Work 2tog (front edge).

2nd row: Pat to last 3 sts. P2togtbl. K1.

3rd row: As 1st row.

4th row: Pat to last 2 sts. P1. K1.

Rep last 4 rows 4 (4-2-2) times more. 17 (19-33-35) sts.

1st row: K1. Sl1. K1. pssso. Pat to last 2 sts. Work 2tog.

2nd row: Pat to last 3 sts. P2togtbl. K1.

3rd row: K1. Sl1. K1. Pssso. Pat to end of row.

4th row: Pat to last 2 sts. P1. K1.

Rep last 4 rows 1 (2-6-6) time(s) more. 9 (7-5-7) sts.

Sizes S and M only: 1st row: K1. Sl1. K1. pssso. Pat to last 2 sts. Work 2tog.

2nd row: Pat to last 2 sts. P1. K1.

3rd row: K1. Sl1. K1. pssso. Pat to end of row.

4th row: As 2nd row. 6 (4) sts.

Size S only: Rep last 4 rows once more. 3 sts.

Next row: K1. Sl1. K1. pssso. 2 sts.

Size M only: 5th row: K1. Sl1. K1. pssso. K1.

6th row: P2. K1.

7th row: K1. Sl1. K1. pssso. 2 sts.

Size L only: 1st row: K1. Sl1. K1. pssso. Pat to last 2 sts. Work 2tog.

2nd row: P2togtbl. K1. 2 sts.

Size XL only: Next row: K1. Sl1. K1. pssso. Pat to last 2 sts. Work 2tog.

Next row: P1. P2togtbl. K1.

Next row: Sl1. K1. pssso. Work 2tog. 2 sts.

Next row: P1. K1.

All Sizes: Next row: Sl1. K1. pssso. Fasten off.

RIGHT FRONT

Work from ** to ** as given for Left Front.

Change to larger needles and proceed in pat as follows:

1st row: (RS). P2. KB1. Work 1st row panel pat A. KB1. Work 1st row panel pat B. KB1. Work 1st row panel pat A. KB1. P1. (P1. K1) 2 (3-5-6) times.

2nd row: (P1. K1) 2 (3-5-6) times. K1. PB1. Work 2nd row panel pat A. PB1. Work 2nd row panel pat B. PB1. Work 2nd row panel pat A. PB1. K2.

3rd row: P2. KB1. Work 3rd row panel pat A. KB1. Work 3rd row panel pat B. KB1. Work 3rd row panel pat A. KB1. P1. (K1. P1) 2 (3-5-6) times.

4th row: (K1. P1) 2 (3-5-6) times. K1. PB1. Work 4th row panel pat A. PB1. Work 4th row panel pat B. PB1. Work 4th row panel pat A. PB1. K2.

These 4 rows form pat. Panel pats A and B are now in position.

Cont in pat, keeping cont of panel pats until work from beg measures 13½ ins [34.5 cm] ending with RS facing for next row.

Place Pocket: Next row: Pat across 28 sts. Slip next 28 sts onto a st holder. Pat across 28 sts from pocket lining. Pat to end of row.

Cont in pat, keeping cont of panel pats until work from beg measures 22½ (23½-25-25½) ins [57 (59.5-63.5-65) cm] ending with WS facing for next row.

Shape raglan: Keeping cont of pat, cast off 4 sts beg next row. 57 (59-63-65) sts.

1st row: (RS). Pat to last 3 sts. K2tog. K1.

2nd row: K1. P2tog. Pat to end of row.

3rd row: As 1st row.

4th row: K1. P1. Pat to end of row.

Rep last 4 rows 4 times more. 42 (44-48-50) sts.

Shape front: 1st row: Work 2tog (front edge). Pat to last 3 sts. K2tog. K1.

2nd row: K1. P2tog. Pat to end of row.

3rd row: As 1st row.

4th row: K1. P1. Pat to end of row.

Rep last 4 rows 4 (4-2-2) times more. 17 (19-33-35) sts.

1st row: Work 2tog. Pat to last 3 sts. K2tog. K1.

2nd row: K1. P2tog. Pat to end of row.

3rd row: Pat to last 3 sts. K2tog. K1.

4th row: K1. P1. Pat to end of row.

Rep last 4 rows 1 (2-6-6) time(s) more. 9 (7-5-7) sts.

Sizes S and M only: 1st row: Work 2tog. Pat to last 3 sts. K2tog. K1.

2nd row: K1. P1. Pat to end of row.

3rd row: Pat to last 3 sts. K2tog. K1.

4th row: As 2nd row. 6 (4) sts.

Size S only: Rep last 4 rows once more. 3 sts.

Next row: K2tog. K1. 2 sts.

Size M only: 5th row: K1. K2tog. K1.

6th row: K1. P2.

7th row: K2tog. K1. 2 sts.

Size L only: Next row: Work 2tog. K2tog. K1.

Next row: K1. P2tog. 2 sts.

Size XL only: Next row: K2tog. K1. K2tog. K1.

Next row: K1. P2tog. P1.

Next row: (K2tog) twice. 2 sts.

All Sizes: Next row: K2tog. Fasten off.

SLEEVES

With smaller needles cast on 53 (53-55-55) sts. Work 4 ins [10 cm] in (K1. P1) ribbing as given for Back ending on a 2nd row and inc 7 (7-9-9) sts evenly across last row. 60 (60-64-64) sts. Place a marker at each end of row 2 ins [5 cm] above cast on edge.

Change to larger needles and proceed in pat as follows:

1st row: (RS). (P1. K1) 1 (1-2-2) time(s). P1. KB1. Work 1st row panel pat A. KB1. Work 1st row panel pat B. KB1. Work 1st row panel pat A. KB1. P1. (K1. P1) 1 (1-2-2) time(s).

2nd row: (K1. P1) 1 (1-2-2) time(s). K1. PB1. Work 2nd row panel pat A. PB1. Work 2nd row panel B. PB1. Work 2nd row panel pat A. PB1. K1. (P1. K1) 1 (1-2-2) time(s).

3rd row: (K1. P1) 1 (1-2-2) time(s). P1. KB1. Work 3rd row panel pat A. KB1. Work 3rd row panel pat B. KB1. Work 3rd row panel pat A. KB1. P1. (P1. K1) 1 (1-2-2) time(s).

4th row: (P1. K1) 1 (1-2-2) time(s). K1. PB1. Work 4th row panel pat A. PB1. Work 4th row panel B. PB1. Work 4th row panel pat A. PB1. K1. (K1. P1) 1 (1-2-2) time(s).

These 4 rows form pat. Panel pats A and B are now in position.

Cont in pat, keeping cont of panel pats, inc 1 st each end of needle on next and following 4th rows until there are 68 (78-74-74) sts, then every 6th row until there are 92 (96-96-100) sts, taking inc sts into side pat.

Cont even in pat until work from marker measures 18 (18½-19-19½) ins [45.5 (47-48-49.5) cm] ending with RS facing for next row.

Shape raglans: Keeping cont of pat, cast off 4 sts beg next 2 rows. 84 (88-88-92) sts.

1st row: (RS). K1. Sl1. K1. pss0. Pat to last 3 sts. K2tog. K1.

2nd row: K1. P2tog. Pat to last 3 sts. P2togtbl. K1.

3rd row: As 1st row.

4th row: K1. P1. Pat to last 2 sts. P1. K1. Rep last 4 rows 8 (9-8-9) times more. 30 (28-34-32) sts.

1st row: (RS). K1. Sl1. K1. pss0. Pat to last 3 sts. K2tog. K1.

2nd row: K1. P1. Pat to last 2 sts. P1. K1. Rep last 2 rows until there are 8 sts ending with RS facing for next row. Cast off.

Pocket Border: With RS of work facing and smaller needles, knit across 28 sts on pocket st holder, dec 1 st at center. 27 sts. Beg on a 2nd row, work 7 rows in (K1. P1) ribbing as given for Back. Cast off in ribbing. Sew pocket lining in position to WS. Fold pocket border in half to WS and sew in position.

FINISHING

Pin garment pieces to measurements. Cover with a damp cloth leaving to dry.

COLLAR

With circular needle cast on 436 (456-476-492) sts.

Proceed in (K1. P1) ribbing for 4 rows.

Next row: (RS). Rib across 3 sts. *Cast off 2 sts. Rib across 21 (22-23-24) sts (including st on needle after cast off). Rep from * 5 times more. Cast off 2 sts. Rib to end of row.

Next row: Rib, casting on 2 sts over cast off sts.

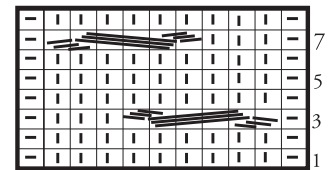
Work a further 2 rows ribbing.

Cast off 143 (149-155-161) sts beg next 2 rows. 150 (158-166-170) sts.

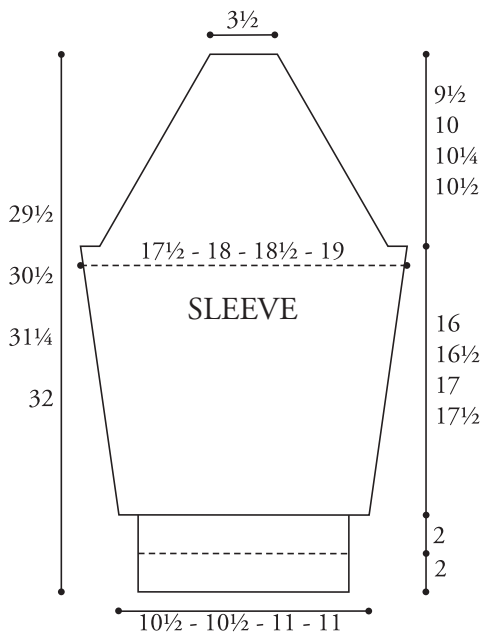
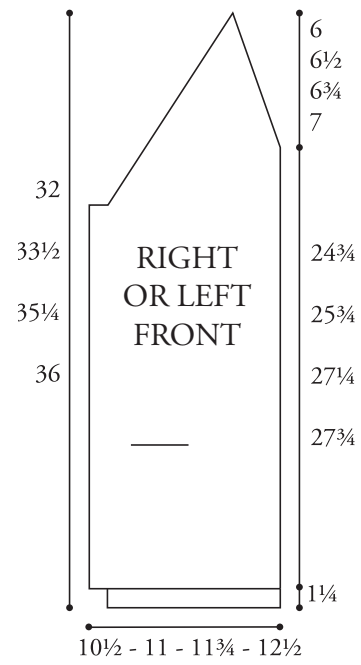
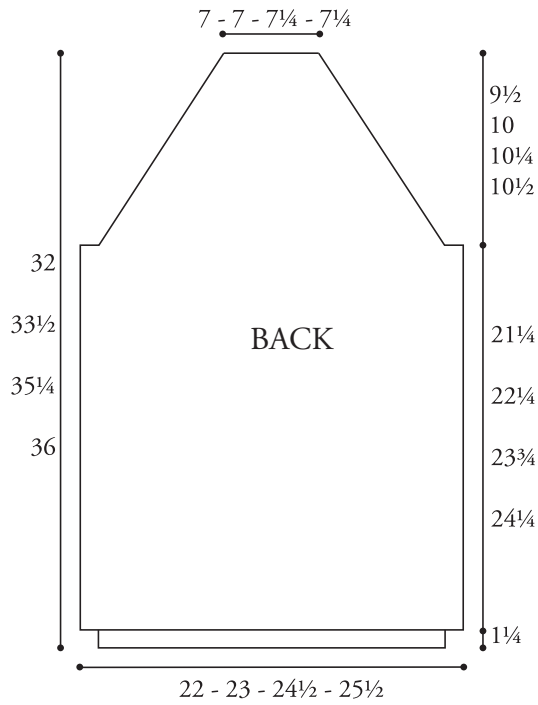
Keeping cont of ribbing, dec 1 st each end of next and every row until there are 124 (128-128-134) sts. Cast off 5 sts beg next and every row until there are 44 (48-48-54) sts. Cast off in ribbing.

Sew raglan seams. Sew Collar to front edge placing long cast off edges along straight edges of Fronts, shaped edges along shaped edges of Fronts and final cast off sts at center back neck. Sew side and sleeve seams reversing seam at markers for cuff turn-back. Sew buttons to correspond to buttonholes.

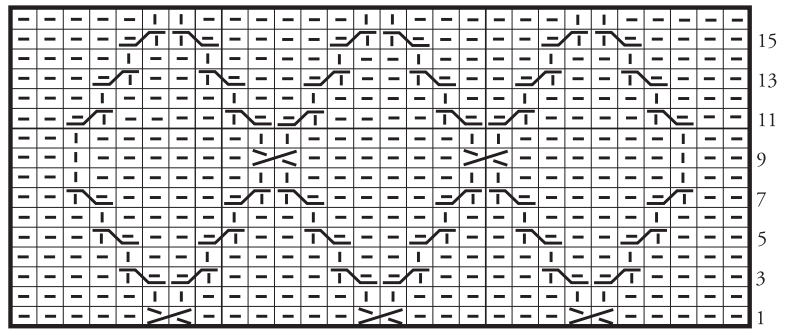
PANEL PAT A




Start Here





PANEL PAT B





Key

 = Knit on RS rows and purl on WS rows.

 = Purl on RS rows and knit on WS rows.

 = T2B

 = T2BP

 = T2FP

 = C6B

 = C6F



... a part of your life.

P.O. Box 40, Listowel ON N4W 3H3