



**Patons**  
**Canadiana**

**Patons**  
**DECOR**

## ALPHABET BALL

### MEASUREMENT

3¾ ins [9.5 cm] diameter

### MATERIALS

**Patons Canadiana** (100 g/3.5 oz) or  
**Patons Décor** (100 g/3.5 oz)

Main Color (MC) (Purple) **1 ball**  
Contrast A (Yellow) **1 ball**

Size 3.75 mm (U.S. 5) knitting needles  
**or size needed to obtain tension.**  
Stuffing.

### TENSION

24 sts and 32 rows = 4 ins [10 cm] in  
stocking st.

### INSTRUCTIONS

**Note:** When working separate areas of color in the design, wind small balls of the colors to be used. Start new colors at appropriate points. To change colors,

twist the two colors around each other where they meet, on WS, to avoid a hole.

\*With MC, cast on 1 st. With A, cast on 1 st. Rep from \* twice more. 6 sts.

**1st row:** (RS). With A, (K1. yfwd. K1) all in first st. \*With MC, (K1. yfwd. K1) all in next st. With A, (K1. yfwd. K1) all in next st. Rep from \* once more. With MC, (K1. yfwd. K1) all in next st. 18 sts.

**2nd row:** \*With MC, (inc 1 st in next st) twice. P1. With A, (inc 1 st in next st) twice. P1. Rep from \* twice more. 30 sts.

**3rd row:** With A, inc 1 st in first st. K2. Inc 1 st in next st. K1. \*With MC, inc 1 st in next st. K2. Inc 1 st in next st. K1. With A, inc 1 st in next st. K2. Inc 1 st in next st. K1. Rep from \* once more. With MC, inc 1 st in next st. K2. Inc 1 st in next st. K1. 42 sts.

**4th row:** \*With MC, P7. With A, P7. Rep from \* twice more.

**5th row:** With A, inc 1 st in first st. K4. Inc 1 st in next st. K1. \*With MC, inc 1 st in next st. K4. Inc 1 st in next st. K1. With A, inc 1 st in next st. K4. Inc 1 st in next st. K1. Rep from \* once more. With MC, inc 1 st in next st. K4.

Inc 1 st in next st. K1. 54 sts.

**6th row:** \*With MC, P9. With A, P9. Rep from \* twice more.

**7th row:** \*With A, K9. With MC, K9. Rep from \* twice more.

**8th row:** As 6th row.

**9th row:** With A, inc 1 st in first st. K6. Inc 1 st in next st. K1. \*With MC, inc 1 st in next st. K6. Inc 1 st in next st. K1. With A, inc 1 st in next st. K6. Inc 1 st in next st. K1. Rep from \* once more. With MC, inc 1 st in next st. K6. Inc 1 st in next st. K1. 66 sts.

**10th row:** \*With MC, P11. With A, P11. Rep from \* twice more.

**11th row:** \*With A, K11. With MC, K11. Rep from \* twice more.

**12th and 13th rows:** As 10th and 11th rows.

**14th row:** As 10th row.

**15th row:** With A, inc 1 st in first st. K8. Inc 1 st in next st. K1. \*With MC, inc 1 st in next st. K8. Inc 1 st in next st. K1. With A, inc 1 st in next st. K8. Inc 1 st in next st. K1. Rep from \* once more. With MC, inc 1 st in next st. K8. Inc 1 st in next st. K1. 78 sts.

**16th row:** \*With MC, P13. With A, P13. Rep from \* twice more.



ABBREVIATIONS: [www.patonsyarns.com/glossary](http://www.patonsyarns.com/glossary)

**17th row:** \*With A, K13. With MC, K13. Rep from \* twice more.

**18th to 25th rows:** As 16th and 17th rows 4 times.

**26th row:** As 16th row.

**27th row:** \*With A, Sl1. K1. pss0. K9. K2tog. With MC, Sl1. K1. pss0. K9. K2tog. Rep from \* twice more. 66 sts.

**28th to 31st rows:** As 10th and 11th rows twice.

**32nd row:** As 10th row.

**33rd row:** \*With A, Sl1. K1. pss0. K7. K2tog. With MC, Sl1. K1. pss0. K7. K2tog. Rep from \* twice more. 54 sts.

**34th and 35th rows:** As 6th and 7th rows.

**36th row:** As 6th row.

**37th row:** \*With A, Sl1. K1. pss0. K5. K2tog. With MC, Sl1. K1. pss0. K5. K2tog. Rep from \* twice more. 42 sts.

**38th row:** As 4th row.

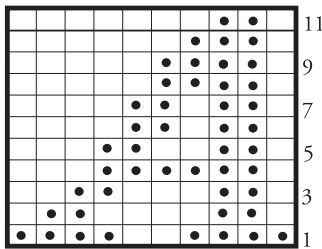
**39th row:** \*With A, Sl1. K1. pss0. K3. K2tog. With MC, Sl1. K1. pss0. K3. K2tog. Rep from \* twice more. 30 sts.

**40th row:** \*With MC, P2tog. P1. P2togtbl. With A, P2tog. P1. P2togtbl. Rep from \* twice more. 18 sts.

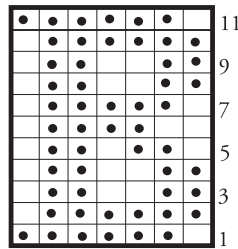
**41st row:** \*With A, Sl1. K2tog. pss0. With MC, Sl1. K2tog. pss0. Rep from \* twice more. 6 sts. Break yarn leaving a long end and thread through rem sts. Fasten securely.

With opposite color, duplicate st letters in sequence as shown below.

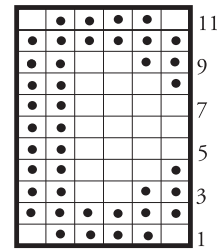
Sew side seam, leave 3 ins [7.5 cm] open for stuffing. Stuff ball firmly. Sew opening closed.



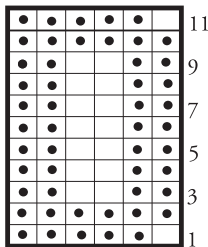
Start Here



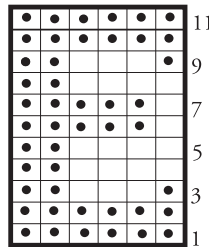
Start Here



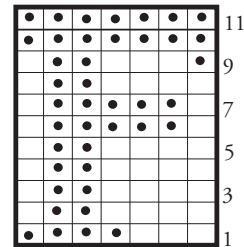
Start Here



Start Here

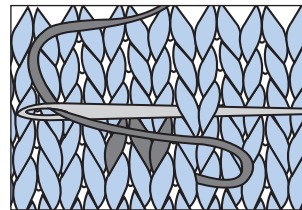
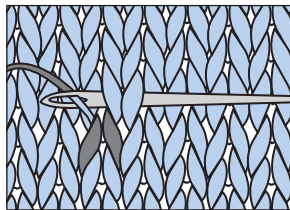
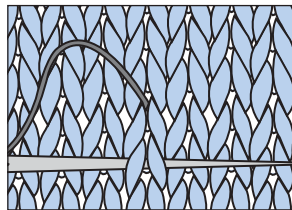


Start Here



Start Here

**DUPLICATE STITCH**



... a part of your life.

P.O. Box 40, Listowel ON N4W 3H3