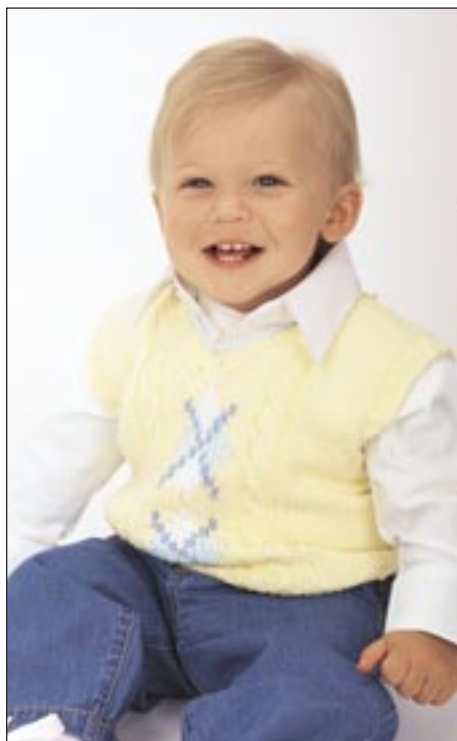


# Patons® Grace



**ARGYLE VEST**

## SIZES

### Chest measurement

6 mos	17	ins	[43	cm ]
12 mos	19	ins	[48	cm ]
18 mos	21	ins	[53.5	cm ]
2 yrs	21½	ins	[54.5	cm ]
3 yrs	22½	ins	[57	cm ]

### Finished chest

6 mos	21	ins	[53.5	cm ]
12 mos	22	ins	[56	cm ]
18 mos	23½	ins	[60.5	cm ]
2 yrs	26	ins	[66	cm ]
3 yrs	27	ins	[68.5	cm ]

## MATERIALS

**Patons Grace** (50 g/1.75 oz)

**Sizes 6 m 12 m 18 m 2 yrs 3 yrs**

**Main Color (MC)** (Yellow)

**2 3 3 3 4 balls**

**Contrast A** (White)

**1 1 1 1 1 ball**

**Contrast B** (Lt Blue)

**1 1 1 1 1 ball**

**Contrast C** (Dk Blue)

**1 1 1 1 1 ball**

Sizes 3.25 mm (U.S. 3) and 4 mm (U.S. 6) knitting needles **or size needed to obtain tension.** Cable needle. Size 4 mm (U.S. G or 6) crochet hook. 2 buttons. St holder.

## TENSION

22 sts and 30 rows = 4 ins [10 cm] with larger needles in stocking st.

## ABBREVIATIONS

**C4F** = slip next 2 sts onto a cable needle and leave at front of work. K2, then K2 from cable needle.

**C4B** = slip next 2 sts onto a cable needle and leave at back of work. K2, then K2 from cable needle.

## INSTRUCTIONS

*The instructions are written for smallest size. If changes are necessary for larger sizes, the instructions will be written thus ( ).*

**Note:** When working from chart, wind small balls of the colors to be used, one for each separate area of color in the design. Start new colors at appropriate

points. To change colors, twist the two colors around each other where they meet, on WS, to avoid a hole.

**PANEL PAT A** (worked over 4 sts)

**1st row:** (RS). Knit.

**2nd and alt rows:** Purl.

**3rd row:** C4F.

**5th row:** Knit.

**6th row:** Purl.

These 6 rows form Panel Pat A.

**PANEL PAT B** (worked over 4 sts)

**1st row:** (RS). Knit.

**2nd and alt rows:** Purl.

**3rd row:** C4B.

**5th row:** Knit.

**6th row:** Purl.

These 6 rows form Panel Pat B.

## FRONT

\*\*With MC and smaller needles, cast on 54 (58-62-70-74) sts.

**1st row:** (RS). K2. \*P2. K2. Rep from \* to end of row.

**2nd row:** P2. \*K2. P2. Rep from \* to end of row.\*\*

Rep these 2 rows (K2. P2) ribbing for 1½ (1½-1½-2-2) ins [4 (4-4-5-5) cm] ending on a 2nd row and inc 7 (7-7-5-5) sts evenly across last row. 61 (65-69-75-79) sts.

Change to larger needles and proceed in pat as follows:

**1st row:** (RS). K16 (18-19-22-24). P2. Work 1st row Panel Pat A. P2. K13 (13-15-15-15). P2. Work 1st row Panel Pat B. P2. Knit to end of row.

**2nd row:** P16 (18-19-22-24). K2. Work 2nd row Panel Pat B. K2. P13 (13-15-15-15). K2. Work 2nd row Panel Pat A. K2. Purl to end of row.

These 2 rows form pat.

Panel Pats A and B are now in position.



ABBREVIATIONS: [www.patonsyarns.com/glossary](http://www.patonsyarns.com/glossary)

Keeping cont of Panel Pats, as placed in last 2 rows, proceed as follows:

**Size 3 only:** Work 4 more rows in pat.

**All Sizes: Place chart:** \*\*\***Next row:** (RS). K16 (18-19-22-24). P2. Work appropriate row Panel Pat A. P2. Work 1st row of Chart I (I-II-II-II). P2. Work appropriate row Panel Pat B. P2. Knit to end of row.

Chart I (I-II-II-II) is now in position.\*\*\*

Keeping cont of pat, work Chart I (I-II-II-II) to end of chart.

Work 2 (4-2-4-6) rows even in pat.

**Place chart:** Work from \*\*\* to \*\*\* as before.

Keeping cont of pat, work Chart I (I-II-II-II) until row 12 (12-14-14-16) of chart is complete, ending with RS facing for next row.

**Shape armholes: Next 2 rows:** Cast off 3 (3-4-4-4) sts. Pat to end of row, working appropriate row of chart. 55 (59-61-67-71) sts.

**Next row:** K2. K2tog. Pat to last 4 sts, working appropriate row of chart. Sl1. K1. pss0. K2.

Work 1 row even, working appropriate row of chart.

Rep last 2 rows 1 (2-2-3-4) time(s) more. 51 (53-55-59-61) sts. Chart I (I-II-II-II) is now complete.

**Neck shaping: Next row:** (RS). K2. K2tog. Pat across 21 (22-23-25-26) sts (neck edge). **Turn.** Leave rem sts on a spare needle.

Work 1 row even in pat.

**Next row:** Pat to last 4 sts. Sl1. K1. pss0. K2.

Work 1 row even in pat.

Rep last 2 rows 10 (11-12-12-13) times more. 13 (13-13-15-15) sts.

Work 2 (2-2-4-2) rows even in pat, ending with RS facing. Cast off.

With RS of work facing, slip next st from spare needle onto a safety pin (center st). Join yarn to rem sts and pat to end of row.

Work 1 row even in pat.

**Next row:** K2. K2tog. Pat to end of row.

Work 1 row even in pat.

Rep last 2 rows 10 (11-12-12-13) times more. 13 (13-13-15-15) sts.

Work 2 (2-2-4-2) rows even in pat, ending with RS facing. Cast off.

## BACK

Work from \*\* to \*\* as given for Front.

Rep these 2 rows (K2. P2) ribbing for 1½ (1½-1½-2-2) ins [4 (4-4-5-5) cm] ending on a 2nd row and inc 3 (3-3-1-1) st(s) evenly across last row. 57 (61-65-71-75) sts.

Change to larger needles and proceed in stocking st until work from beg measures same length as Front to armhole shaping, ending with RS facing for next row.

**Shape armholes:** Cast off 3 (3-4-4-4) sts beg next 2 rows. 51 (55-57-63-67) sts.

**Next row:** K2. K2tog. Knit to last 4 sts. Sl1. K1. pss0. K2.

Purl 1 row.

Rep last 2 rows 2 (3-3-4-5) times more. 45 (47-49-53-55) sts.

Cont even until work from beg measures same length as Front to shoulder, ending with RS facing for next row.

**Next row:** Cast off 13 (13-13-15-15) sts. K19 (21-23-23-25) and slip these sts onto a st holder. Cast off rem 13 (13-13-15-15) sts.

## FINISHING

**Neckband:** Sew right shoulder seam. With RS of work facing, MC and smaller needles, pick up and knit 23 (25-27-31-37) sts down left front neck edge. Knit st from safety pin and mark as center st. Pick up and knit 23 (25-27-31-37) sts up right front neck edge. K19 (21-23-23-25) from back st holder. 66 (72-78-86-100) sts.

**1st row:** (WS). \*P2. K2. Rep from \* to center 5 sts. K2tog. P1. K2togtbl. \*K2. P2. Rep from \* to last 1 (3-1-1-1) st(s). K1 (2-1-1-1). P0 (1-0-0-0).

(K2. P2) ribbing is now in position.

**2nd row:** Rib to center 5 sts. P2tog. K1. P2togtbl. Rib to end of row.

Rep last 2 rows once more. Break MC. **Next row:** With B, as 1st row.

With B, cast off in ribbing. Place a marker on shoulder seam 2 ins [5 cm] from cast off edge of neckband. Sew left shoulder and neckband seam leaving open after marker. With MC and crochet hook, work 2 chain button loops on Front shoulder seam. Sew buttons on Back shoulder seam to correspond to loops.

**Armbands:** With RS of work facing, MC and smaller needles, pick up and knit 62 (66-70-74-78) sts evenly along armhole edge. Beg on a 2nd row, work 5 rows in (K2. P2) ribbing as given for Front. Cast off in ribbing. Sew side and armband seams.

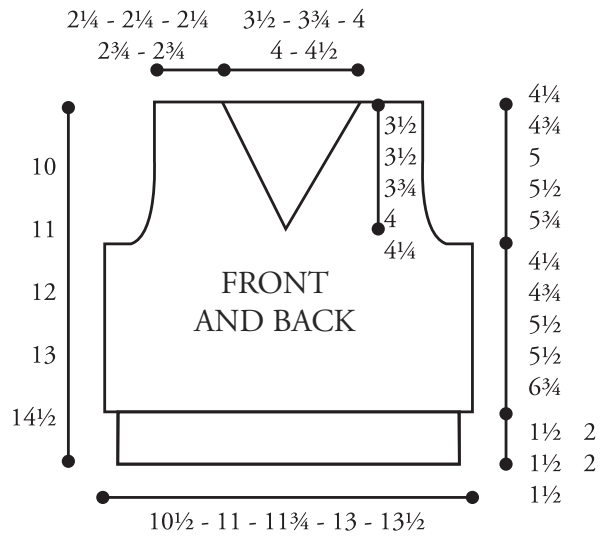


CHART I

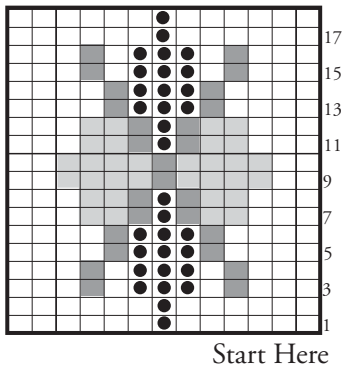
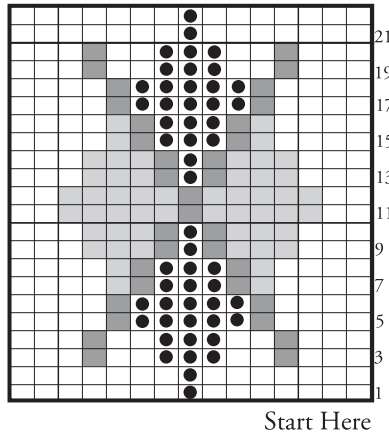


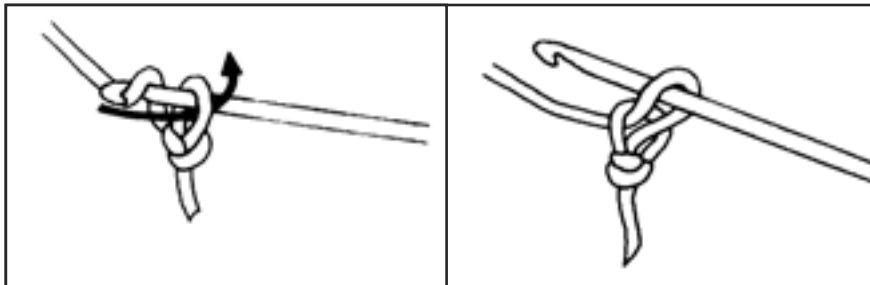
CHART II



Key

- = MC
- = Contrast A
- = Contrast B
- = Contrast C

CHAIN STITCH



**Patons**

*... a part of your life.*

P.O. Box 40, Listowel ON N4W 3H3