



## FELTED SHOPPING BAG

### Important to know before felting

- Record all the measurements and changes before and after felting. You will be able to adjust the method to produce proper results.
- Always test a sample. Different colored yarns may felt differently.
- Colorfastness can be affected by very hot water.
- Any knitting that has been properly felted becomes very dense and matted.

### How To Felt

- Using low water level, run a Hot/Cold cycle for 5 to 15 min. Add a pair of old jeans for agitation.
- Add 2 tablespoons of baking soda for a small load. After one cycle, check for size. Repeat if necessary.
- Run through the rinse and dry spin cycle.
- Do not use a clothes dryer.
- Shape piece to correct measurements.
- Lay felted piece on a dry towel, away from direct heat or sunlight.
- If an edge ripples, baste a thread through the edge and gather in. Remove the thread after the felting is dry.

**MEASUREMENTS:** Approx 16 ins [40.5 cm] wide by 12 ins [30.5 cm] tall, excluding handles.

### MATERIALS

Patons® Classic Wool (100 g / 3.5 oz)  
**2 balls** of 77707 (That's Red) as **Main Color (MC)**,  
**1 ball each** of 77734 (Too Teal) as **A**,  
 00238 (Paprika) as **B**,  
 00204 (Old Gold) as **C**,  
 and 00203 (Maize) as **D**.

Size 5 mm (U.S. 8) circular knitting needle 32 ins [80 cm] long. Pair of size 5 mm (U.S. 8) double-pointed knitting needles **or size needed to obtain tension**.

### TENSION

19 sts and 25 rows = 4 ins [10 cm] in stocking st.

### INSTRUCTIONS

**Note:** When working from chart, carry yarn not in use loosely across WS of work but never over more than **2** sts. When it must pass over more than 2 sts, weave it over and under color in use on next st or at center point of sts it passes over. The colors are never twisted around one another.

**Felting Tip:** When changing colors in Stripe Pat, leave ends approx 2 ins [5 cm] long of each color on WS of work. Knot ends to secure. After felting, snip off knots.

### BAG

With circular needle and MC, cast on 192 sts. Join in rnd, placing marker on first st.

Knit 16 rnds.

Proceed in Stripe Pat as follows:

With D, knit 4 rnds.

With C, knit 4 rnds.

With B, knit 4 rnds.

With A, knit 4 rnds.

With D, knit 4 rnds.

With C, knit 4 rnds.

With B, knit 4 rnds.

With MC, knit 4 rnds.

Rep last 32 rnds for Stripe Pat once more.

Knit in Chart to end of chart, reading rnds from **right** to left and noting 12 st rep will be worked 16 times.

With MC, knit 15 rnds.

**Next rnd:** K121. Cast off 71 sts.

**Shape base: Next row: (RS).** K95. Sl1. K1. pss0. **Turn.** Leave rem sts unworked.

**Next row: K70.** K2tog. **Turn.** Leave rem sts unworked.

**Next row: K70.** Sl1. K1. pss0. **Turn.** Leave rem sts unworked.

**Next row: K70.** K2tog. **Turn.** Leave rem sts unworked.

Rep last 2 rows until there are 71 sts. Cast off.

Sew cast off edges tog to close bottom of Bag.

### HANDLES (make 2)

With pair of double pointed needles and MC, cast on 10 sts. Knit 16 rows.

**Next row: (WS).** \*K2tog. Rep from \* to end of row. 5 sts.

**Next row: Knit. Do not turn.** Slide sts to other end of needle. Rep last row until work from beg measures 18 ins [45.5 cm],

**Next row: (RS).** Knit. Turn.

**Next row: (Inc 1 st in next st) 5 times.** 10 sts.

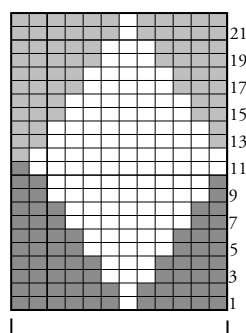
Knit 16 rows. Cast off.

**FINISHING:** Felt pieces following How to Felt instructions. Shape pieces to required measurements and let dry, keeping tabs at ends of Handles flat.

**Felting Tip:** To shape Bag while it dries, place a cardboard box wrapped in a plastic bag inside Bag. The box should be large enough for a snug fit.

Fold Bag flat and mark positions 5 ins [12.5 cm] in from each side along top edge of Bag. Center tab ends of Handles on markers and sew in position, having top edge of tabs approx 1½ ins [4 cm] below top edge of Bag as shown in picture.

### CHART



12 st rep Start Here

### KEY

□ = A

■ = B

■ = C

