

Patons® Classic Wool



Patons® Classic Wool
FELTED
HOUNDSTOOTH BAG

FELTED MEASUREMENTS

Approx 11½ ins [29 cm] wide x 8½ ins [21.5 cm] high.

MATERIALS

Patons® Classic Wool (100 g / 3.5 oz)

Main Color (MC) (226 Black) **2 balls**

Contrast A (201 Winter White) **1 ball**

Contrast B (230 Bright Red) **1 ball**

Size 4.5 mm (U.S. 7) knitting needles. Set of four size 4.5 mm (U.S. 7) double pointed knitting needles **or size needed to obtain tension.** ¾ yard [0.7 m] of ½ inch [1 cm] thick cable cord.

TENSION

20 sts and 26 rows = 4 ins [10 cm] in stocking st.

INSTRUCTIONS

Note: When working from chart, carry yarn loosely across WS of work but never over more than 5 sts. When it must pass over more than 5 sts, weave it over and under color in use on next st or at center point of sts it passes over.

Front and Back Section

With MC and pair of needles, cast on 88 sts.

Work rows 1 to 18 of Chart I in stocking st to end of chart reading **knit** rows from **right** to left and **purl** rows from **left** to right noting 7 st rep will be worked 11 times.

Last 18 rows form Chart Pat.

Cont in Chart Pat until work from beg measures 35½ ins [90 cm] ending with RS facing for next row. Cast off with MC.

Side Section

With MC and pair of needles, cast on 38 sts. Work 16 ins [40.5 cm] in stocking st ending with RS facing for next row. Cast off.

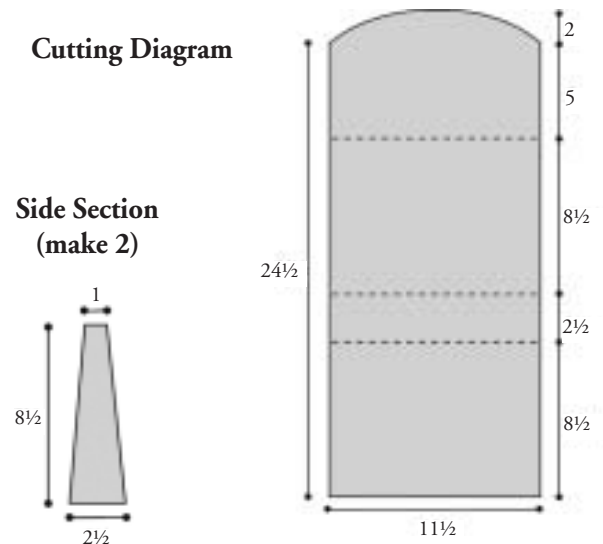
Strap

With MC and set of four needles, cast on 9 sts. Divide sts evenly on 3 needles and place a marker on first st. Knit in rnds until work from beg measures 28 ins [71 cm]. Cast off.

FINISHING

Felt all pieces. Using Diagram, cut Front and Back and Side sections to measurements. Pin sides in position, noting narrow end is at top of Bag. Using 2 strands of B, work blanket st embroidery to join Sides to Front and Back. Cont embroidery around front of flap as illustrated. Trim Strap to measure 23 ins [58.5 cm]. Insert cable cord through center of Strap. Secure ends of cord to Strap to prevent Strap from stretching. Sew ends of Strap to tops of Side sections.

Cutting Diagram



Side Section (make 2)

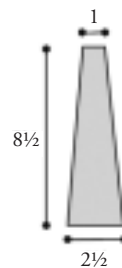
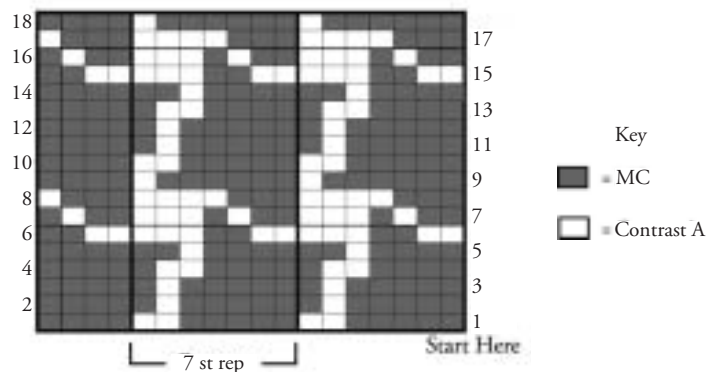


Chart I



HOW TO FELT INSTRUCTIONS

FELTING

- Put pieces in top-loading washing machine. Put in a pair of jeans or large towel (in non-interfering color) for extra agitation. Using low water level, run a Hot/Cold cycle for 15 min.
- Add 2 tablespoons of baking soda for a small load. After one cycle, check for size. Repeat as necessary.
- Run through the rinse and dry spin cycle.
- Lay felted piece on a dry towel, away from direct heat or sunlight.
- Shape piece to correct measurements.
- Allow to dry thoroughly. Do not use a clothes dryer.
- If an edge ripples, baste a thread through the edge and gather in. Remove the thread after felted item is dry.
- When piece is dry, use tailor's chalk to mark cutting (trimming) lines.

AFTERCARE

- You have spent a lot of time and care completing these items through their knitting/crocheting and felting stages. A little thought to aftercare will ensure that you will have these beautiful felted items for many years to come.
- After you have subjected your item to the felting process, you may think that it has gone through the most vigorous and tortured wash that yarn could ever endure. Now you assume that you can throw that felted item into the hot wash cycle along with your sheets. Do not do it! Treat your newly felted item with caution and care in order to avoid further shrinkage or distortion.
- Felted handmade items can always be improved with brushing.
- Even a slight pressing will give a smoother appearance to felted fabric. Always press lightly using a steam iron and a damp cloth. Never press down on the fabric but hold the iron just above the fabric.

Important to know before felting:

- It is important to record all the measurements and changes before and after felting. You will be able to either adjust or repeat the method to produce reliable and consistent results.
- Always test a sample. Different colored yarns may felt differently. Some colors have to undergo the felting more than once in order to achieve the desired result.

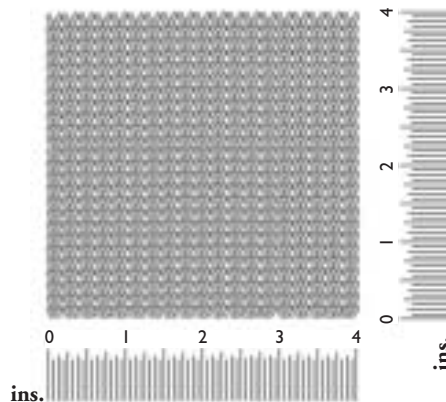
- As yarn will be going into very hot water, color-fastness can be affected. Again, testing a sample will give you an indication of how the color will be affected in very hot water.
- Any knitting that has been properly felted will have a distinct texture. The knitted or crocheted piece becomes very dense and matted. This will be one of the key criteria for determining that felting has occurred.

BASED ON OUR CALCULATIONS

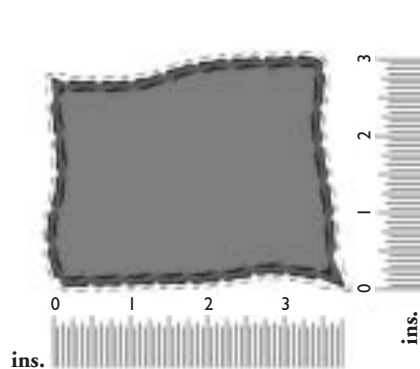
Knit Swatch

After felting, the sample is approx 85% of the width and 75% of the length of the knitted sample before felting.

Knit Swatch Before Felting
(19 sts and 25 rows)



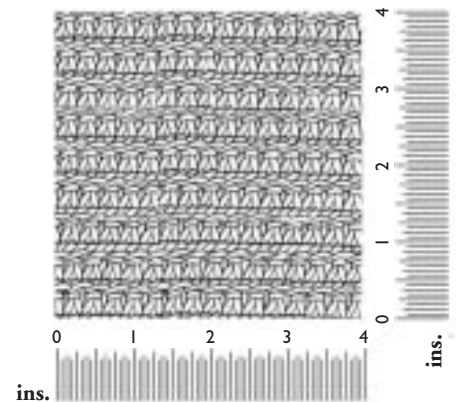
Knit Swatch After Felting



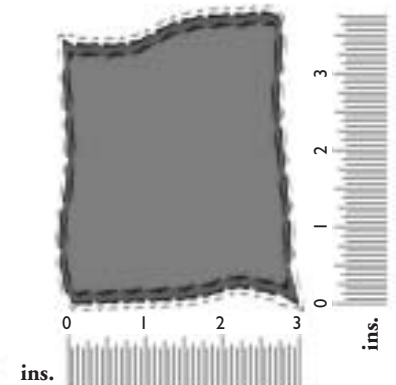
Crochet Swatch

After felting, the sample is approx 80% of the width and 95% of the length of the crocheted sample before felting.

Crochet Swatch Before Felting
(15 sc and 17 rows)



Crochet Swatch After Felting



Patons

... a part of your life.

P.O. Box 40 Listowel ON N4W 3H3