



**PATONS® ASTRA
PULLOVER WITH NORWEGIAN
PATTERN
(TO KNIT)**

SIZES

To fit chest measurement

- 2 yrs** 21 ins [53.5 cm]
- 4 yrs** 23 ins [58.5 cm]
- 6 yrs** 25 ins [63.5 cm]
- 8 yrs** 26½ ins [67.5 cm]
- 10 yrs** 28 ins [71 cm]

Finished chest

- 2 yrs** 26 ins [66 cm]
- 4 yrs** 27½ ins [70 cm]
- 6 yrs** 30 ins [76 cm]
- 8 yrs** 32 ins [81.5 cm]
- 10 yrs** 34½ ins [87.5 cm]

MATERIALS

Patons® Astra (50 g/1.75 oz)

Sizes: 2 (4-6-8-10) yrs

Main Color (MC):

(Blue) **5 (5-6-7-7) balls**

Contrast A: (Aran) 1 (1-2-2-2) ball(s)

Sizes 3.75 mm (U.S. 5) and 4 mm (U.S. 6) knitting needles **or size needed to obtain tension**. 2 st holders. 6 buttons for sizes 2 and 4.

TENSION

22 sts and 28 rows = 4 ins [10 cm] with larger needles in stocking st.

ABBREVIATIONS

- Alt** = Alternate.
- Beg** = Beginning.
- Cont** = Continue(ity).
- Dec** = Decrease.
- Inc** = Increase 1 stitch by knitting into front and back of next stitch.
- K** = Knit.
- K2tog** = Knit next 2 stitches together.
- P** = Purl.
- Psso** = Pass slipped stitch over.
- Rem** = Remaining.
- Rep** = Repeat.
- RS** = Right side.
- Sl1** = Slip next stitch knitwise.
- St(s)** = Stitch(es).
- WS** = Wrong side.
- Yfwd** = Yarn forward.

INSTRUCTIONS

The instructions are written for smallest size. If changes are necessary for larger size(s) the instructions will be written thus (.). Numbers for each size are shown in the same color throughout the pattern. When only one number is given in black, it applies to all sizes.

Note: When working from chart, carry yarn not in use loosely across WS of work

but never over more than 5 sts. When it must pass over more than 5 sts, weave it over and under color in use on next st or at center point of sts it passes over. The colors are never twisted around one another.

BACK

With MC and smaller needles, cast on **71 (75-83-87-95) sts.

1st row: (RS). K1. *P1. K1. Rep from * to end of row.

2nd row: P1. *K1. P1. Rep from * to end of row.

Rep last 2 rows for (K1. P1) ribbing **7 (7-9-9-9)** times more.

Change to larger needles and beg with a knit row, proceed in stocking st until work from beg measures **5 (6½-7½-8½-9½)** ins [**12.5 (16.5-19-21.5-24)** cm], ending with RS facing for next row and inc 2 sts evenly across last row. **73 (77-85-89-97)** sts.

Next 14 rows: Work rows 1 to 14 of Chart in stocking st, reading **knit** rows from **right** to left and **purl** rows from **left** to right, noting 4 st rep will be worked **18 (19-21-22-24)** times.

Shape armholes: Next row: Keeping cont of Chart I, cast off **4 (4-8-8-8)** sts beg of next 2 rows. **65 (69-69-73-81)** sts.

Cont working Chart I to end of chart.

Next row: With MC, knit, dec 2 sts evenly across. **63 (67-67-71-79)** sts.**

Cont even until armhole measures **5 (5½-6-6-6½)** ins [**12.5 (14-15-15-16.5)** cm], ending with RS facing for next row.



Shape shoulders: Cast off **18** (**19-19-19-22**) sts beg next 2 rows. Leave rem **27** (**29-29-33-35**) sts on a st holder.

FRONT

Work from ** to ** as given for Back.

With MC, cont even until armhole measures **3** (**3-31/4-31/4-31/2**) ins [**7.5** (**7.5-8.5-8.5-9**) cm], ending with RS facing for next row.

Shape neck: Next row: K**23** (**25-25-25-29**). K2tog (neck edge). **Turn.** Leave rem sts on a spare needle.

Dec 1 st at neck edge on next **6** (**6-4-4-4**) rows, then on every following alt row **0** (**1-3-4-4**) time(s). **18** (**19-19-19-22**) sts.

Cont even until armhole measures **4** (**41/2-6-6-61/2**) ins [**10** (**11.5-15-15-16.5**) cm], ending with RS facing for next row. Cast off.

With RS of work facing, slip next **13** (**13-13-17-17**) sts onto a st holder for front neck. Rejoin MC to rem sts: Sl1. K1. pss0. Knit to end of row. **24** (**26-26-27-31**) sts.

Dec 1 st at neck edge on next **6** (**6-4-4-4**) rows, then on every following alt row **0** (**1-3-4-4**) time(s). **18** (**19-19-19-22**) sts.

Cont even until armhole measures **4** (**41/2-6-6-61/2**) ins [**10** (**11.5-15-15-16.5**) cm], ending with WS facing for next row. Cast off.

SLEEVES

With MC and smaller needles, cast on **37** (**37-37-41-41**) sts.

Work **16** (**16-20-20-20**) rows in (K1. P1) ribbing, as given for Back, inc 2 sts evenly across last row. **39** (**39-39-43-43**) sts.

Change to larger needles and proceed in stocking st, inc 1 st at each end of needle on 3rd and every following 4th row to **53** (**57-59-47-53**) sts, then every following 6th row to **55** (**59-63-63-71**) sts.

Cont even until work from beg measures **71/2** (**91/2-111/2-13-141/2**) ins [**19** (**24-29-33-37**) cm], ending with RS facing for next row and inc 2 sts evenly across last row. **57** (**61-65-65-73**) sts.

Work rows 1 to 10 of Chart, reading **knit** rows from **right** to left and **purl** rows from **left** to right, noting 4 st rep will be worked **14** (**15-16-16-18**) times. Place marker at each end of last row.

Sizes 2 and 4 only: Work rows 11 to 14 of Chart I. With MC, cast off.

Sizes 6, 8 and 10 only: Work rows 11 to 20 of Chart I. With MC, cast off.

FINISHING: Pin garment pieces to measurements. Cover with a damp cloth, leaving cloth to dry.

Sizes 2 and 4 only: Back neckband: With RS of Back facing, MC and smaller needles, K**27** (**29**) from back st holder, dec 2 sts evenly across. **25** (**27**) sts.

*****1st row:** P2. *K1. P1. Rep from * to last st. P1.

2nd row: K2. *P1. K1. Rep from * to last st. K1.

Rep last 2 rows twice more. Cast off in ribbing (WS).***

Front neckband: With RS of Front facing, MC and smaller needles, pick up and knit **12** (**15**) sts down left neck edge. K**13** from front st holder, dec 2 sts evenly across. Pick up and knit **12** (**15**) sts up right neck edge. **35** (**41**) sts.

Work from *** to *** as given for Back neckband.

Buttonhole bands: With RS of Front facing, MC and smaller needles, pick up and knit **25** (**27**) sts evenly along right shoulder of Front and side edge of neckband.

1st to 3rd rows: Work as given for Back neckband.

4th row: (RS). Rib 5 sts. [yfwd. K2tog. Rib **5** (**6**) sts] twice. yfwd. K2tog. Rib 4 sts.

5th and 6th rows: Work as given for Back neckband. Cast off in ribbing (WS). Rep for left shoulder.

Button bands: With RS of Back facing, work as given for Buttonhole bands omitting references to buttonholes.

Lap Buttonhole bands over Button bands. Sew buttons to correspond to buttonholes.

Sizes 6, 8 and 10 only: Neckband: Sew right shoulder seam.

With RS of work facing, MC and smaller needles, pick up and knit (**15-15-16**) sts down left front neck edge. K(**13-17-17**) from front st holder, dec 2 sts evenly across. Pick up and knit (**15-15-16**) sts up right front neck edge. K(**29-33-35**) from back st holder, dec 1 st at center. (**69-77-81**) sts.

1st row: (WS). P1. *K1. P1. Rep from * to end of row.

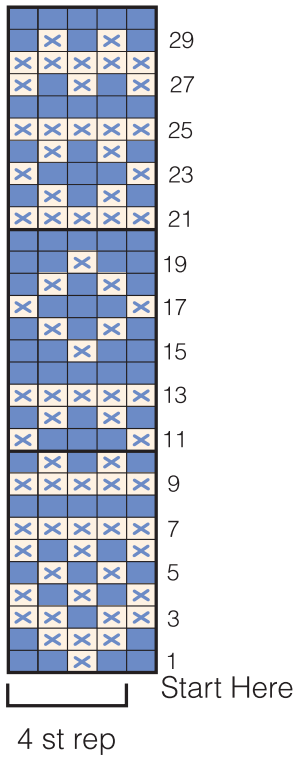
2nd row: K1. *P1. K1. Rep from * to end of row.

Rep last 2 rows twice more, then 1st row once. Cast off in ribbing.

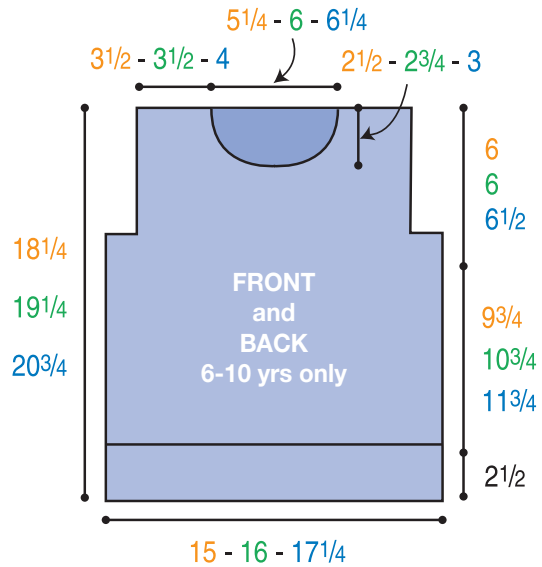
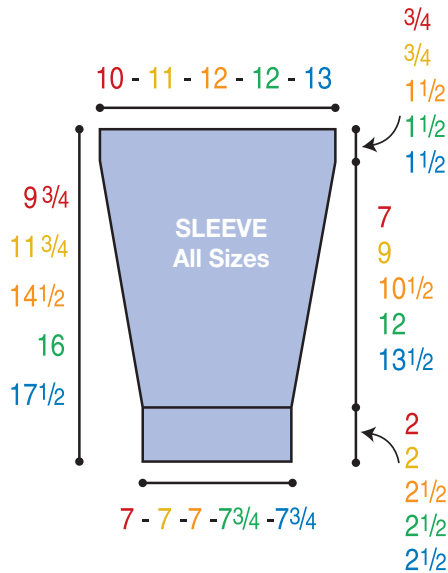
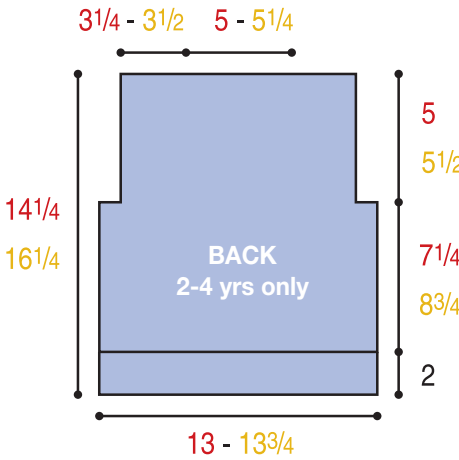
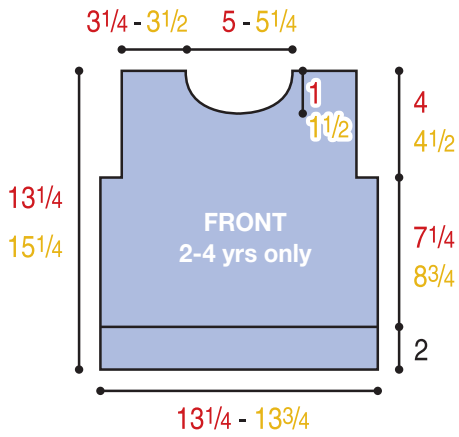
Sew right shoulder and neckband seam.

All sizes: Sew in sleeves, placing rows above markers against cast off sts of armholes to form square armholes. Sew side and sleeve seams.

Chart



- Key**
- Main Color (MC)
 - Contrast A



... a part of your life.

P.O. Box 40, Listowel ON N4W 3H3