



LILY® SUGAR'N CREAM®
"MY STUFF" DRAWSTRING BAG (TO CROCHET)

MEASUREMENTS

Approx 11" x 15" [28 x 38 cm], excluding straps.

MATERIALS

Lily® Sugar'n Cream® (70.9 g/2.5 oz; 109 m/120 yds)

Version I

Main Color (MC) Mod Green (01223) **3 balls (328 yds/300 m)**
Contrast A Bright Navy (00009) **2 balls (219 yds/200 m)**

Version II

Main Color (MC) Grape (00071) **3 balls (328 yds/300 m)**
Contrast A Robin's Egg (01215) **2 balls (219 yds/200 m)**

Size 5 mm (U.S. H/8) crochet hook **or size needed to obtain gauge.**

GAUGE

13 sc and 14 rows = 4" [10 cm].

ABBREVIATIONS

www.sugarncream.com/abbreviations

Approx = Approximately	Sc = Single crochet
Beg = Beginning	Sl st = Slip stitch
Ch = Chain(s)	Sp(s) = Space(s)
Cont = Continue(ity)	St(s) = Stitch(es)
Rep = Repeat	Tog = Together
RS = Right side	WS = Wrong side

INSTRUCTIONS

Note: Bag is worked sideways.

When working from chart and joining colors, work to last 2 loops on hook of first color. Draw new color through last 2 loops and proceed. Carry color when not in use loosely across top of previous row and work sts around it to avoid stranding.

BAG

With MC, ch 109.

1st row: (RS). 1 sc in 2nd ch from hook. 1 sc in each ch to end of chain. Turn. 108 sc.

2nd row: Ch 1. 1 sc in each sc to end of row. Turn.

3rd row: Ch 1. 1 sc in each of next 6 sc. Ch 2. Miss next 2 sc. 1 sc in each of next 92 sc. Ch 2. Miss next 2 sc. 1 sc in each of next 6 sc. Turn.

4th row: 1 sc in each of next 6 sc. 2 sc in next ch-2 sp. 1 sc in each of next 92 sc. 2 sc in next ch-2 sp. 1 sc in each of next 6 sc. Turn.

5th row: With MC, ch 1. 1 sc in each of next 6 sc. Ch 2. Miss next 2 sc. 1 sc in each of next 4 sc. Work 1st row of Chart, *reading row from right to left*. With MC, 1 sc in each of next 46 sc. Ch 2. Miss next 2 sc. 1 sc in each of next 6 sc. Turn.

6th row: With MC, ch 1. 1 sc in each of next 6 sc. 2 sc in next ch-2 sp. 1 sc in each of next 46 sc. Work 2nd row of Chart, *reading row from left to right*. With MC, 1 sc in each of next 4 sc. 2 sc in next ch-2 sp. 1 sc in each of next 6 sc. Turn.

Chart (see page 2) is now in position.

Keeping cont of chart, cont as established until all 23 rows of chart are complete. Break A.

With MC, rep 3rd and 4th rows until work from beg measures 11" [28 cm]. Fasten off.



P.O. Box 40 Listowel ON N4W 3H3

STRAPS (make 2)

With A, ch 67.

1st rnd: 1 dc in 4th ch from hook. 1 dc in each ch to end of ch. *Working into rem loops along opposite side of ch, work 1 dc in each ch to end of ch.* Ch 1. Do **not** fasten off.

Fold Strap in half lengthwise with RS facing each other (WS of last rnd will show). Join Strap by working 1 sl st through tops of corresponding dc and foundation ch to end of row. Fasten off.

FINISHING

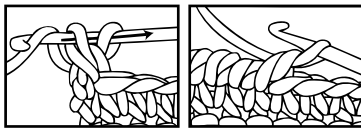
With WS tog, fold Bag in half widthwise. *Working through both thicknesses, join A with sl st at fold.*

1st row: Ch 1. Work 54 evenly across side of Bag. Do **not** turn.

2nd row: Ch 1. *Working from left to right instead of from right to left as usual, work 1 reverse sc in each sc across.* Fasten off.

Rep on opposite side.

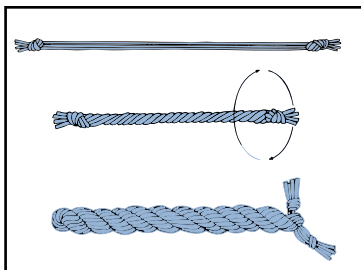
REVERSE SC



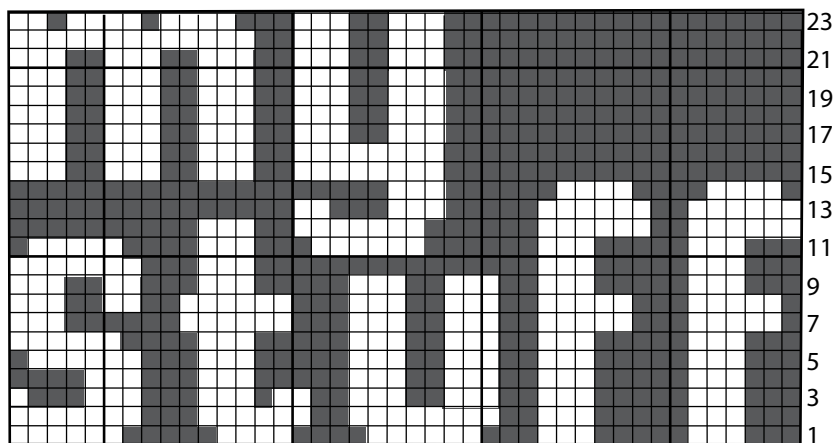
Sew Straps to corners of Bag as shown in picture.

Twisted Cord: Cut 3 strands of A 100" [254 cm] long. With all strands tog, hold one end and with someone holding other end, twist strands to the right until they begin to curl. Fold the 2 ends tog and tie in a knot so they will not unravel. The strands will now twist themselves tog. Thread cord through ch-2 sps of top edge, having ends meet at center front as shown in picture.

TWISTED CORD DIAGRAM



CHART



Start Here

KEY

- = Main Color (MC)
- = Contrast A



P.O. Box 40 Listowel ON N4W 3H3