



LILY® SUGAR'N CREAM®
HEART DISHCLOTH / BLANKET (TO KNIT)

MEASUREMENTS

Dishcloth: Approx 8" [20.5 cm] square.

Blanket: Approx 32" x 40" [81.5 x 101.5 cm]

MATERIALS

Lily® Sugar'n Cream® (70.9 g/2.5 oz; 109 m/120 yds)

Dishcloth (00095 Red) **1 ball**

Blanket (01004 Soft Ecru) **9 balls or 865 m/950 yds**

Size 4 mm (U.S. 6) knitting needles **or size needed to obtain gauge.**

GAUGE

21 sts and 28 rows = 4" [10 cm] in stocking st.

ABBREVIATIONS

www.sugarcream.com/glossary

Alt = Alternate(ing).

Approx = Approximately.

K = Knit.

K2tog = Knit next 2 stitches together.

Pat = Pattern.

Pssso = Pass slipped stitch over.

P = Purl.

P1tbl = Purl next stitch (or loop) through back of loop.

Rep = Repeat.

RS = Right side.

S11 = Slip next stitch knitwise.

Ssk = Slip next 2 stitches knitwise one at a time. Pass them back onto left-hand needle, then knit through back loops together.

St(s) = Stitch(es).

Tog = Together.

WS = Wrong side.

Yo = Yarn over.

INSTRUCTIONS

DISHCLOTH MOTIF (see chart)

Cast on 37 sts.

1st row: (RS). *K1. P1. Rep from * to last st. K1.

2nd to 6th rows: Rep last row for Seed St Pat 5 times more.

7th row: (K1. P1) twice. Knit to last 4 sts. (P1. K1) twice.

8th row: (K1. P1) twice. K1. Purl to last 5 sts. (K1. P1) twice. K1.

9th and 10th rows: As 7th and 8th rows.

11th row: (K1. P1) twice. K4. yo. [S11. K2tog. pssso. (yo) twice] 6 times. S11. K2tog. pssso. yo. K4. (P1. K1) twice.

12th row: (K1. P1) twice. K1. Purl to last 5 sts (working into double yo as follows: P1. P1tbl). (K1. P1) twice. K1.

13th row: (K1. P1) twice. K4. K2tog. yo. K17. yo. ssk. K4. (P1. K1) twice.

14th and alt rows: As 8th row.

15th row: (K1. P1) twice. K4. yo. ssk. K17. K2tog. yo. K4. (P1. K1) twice.

17th row: (K1. P1) twice. K4. K2tog. yo. K8. P1. K8. yo. ssk. K4. (P1. K1) twice.

19th row: (K1. P1) twice. K4. yo. ssk. K7. P3. K7. K2tog. yo. K4. (P1. K1) twice.

21st row: (K1. P1) twice. K4. K2tog. yo. K6. P5. K6. yo. ssk. K4. (P1. K1) twice.

23rd row: (K1. P1) twice. K4. yo. ssk. K5. P7. K5. K2tog. yo. K4. (P1. K1) twice.

25th row: (K1. P1) twice. K4. K2tog. yo. K4. P9. K4. yo. ssk. K4. (P1. K1) twice.

27th row: (K1. P1) twice. K4. yo. ssk. K3. P11. K3. K2tog. yo. K4. (P1. K1) twice.

29th row: (K1. P1) twice. K4. K2tog. yo. K2. P13. K2. yo. ssk. K4. (P1. K1) twice.

31st row: (K1. P1) twice. K4. yo. ssk. K2. P13. K2. K2tog. yo. K4. (P1. K1) twice.

33rd row: (K1. P1) twice. K4. K2tog. yo. K2. P6. K1. P6. K2. yo. ssk. K4. (P1. K1) twice.

35th row: (K1. P1) twice. K4. yo. ssk. K2. P5. K3. P5. K2. K2tog. yo. K4. (P1. K1) twice.

37th row: (K1. P1) twice. K4. K2tog. yo. K3. P3. K5. P3. K3. yo. ssk. K4. (P1. K1) twice.



P.O. Box 40 Listowel ON N4W 3H3

39th row: As 15th row.

41st row: As 13th row.

43rd and 44th rows: As 11th and 12th rows.

45th and 46th rows: As 7th and 8th rows.

47th to 52nd rows: As 1st row.

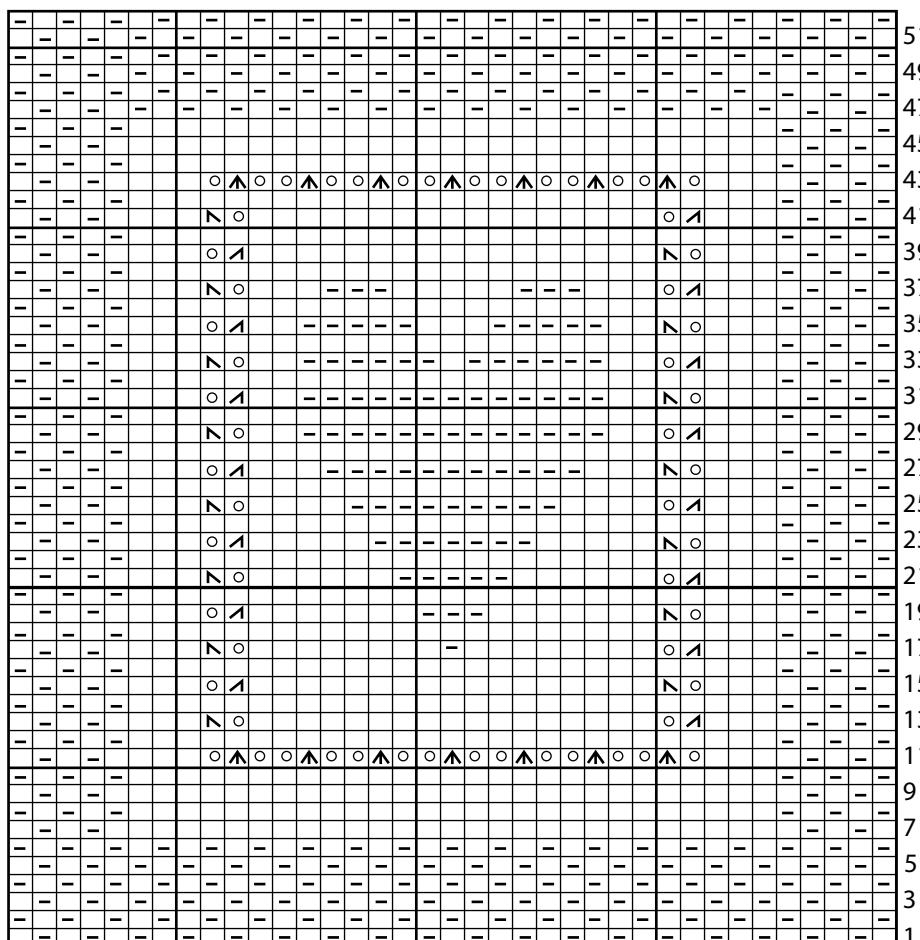
Cast off in pat.

BLANKET

Make 20 Dishcloth Motifs.

Sew Motifs tog into 4 Strips, 5 Motifs long. Sew 4 Strips tog.

CHART



KEY

- = Knit on RS rows. Purl on WS rows.
- = Purl on RS rows. Knit on WS rows.
- ▲ = Sl1. K2tog. pss0.
- = yo.
- ⦿ = K2tog.
- ◻ = ssk.

Start Here



P.O. Box 40 Listowel ON N4W 3H3