



## Sweetheart or Teddy Set (to crochet)

### MATERIALS

Lily® Sugar'n Cream (Solids: 70.9 g/  
2.5 oz/109 m/120 yds):

#### TEDDY SET

Main Color (MC): (White) 2 balls

Contrast A: (Lt Blue) 1 ball

#### SWEETHEART SET

Main Color (MC): (White) 2 balls

Contrast A: (Pink) 1 ball

Size 4 mm (U.S. G or 6) crochet hook  
or size needed to obtain gauge.  
Button. 1¼ yards [1.15 m] of ¼ inch  
[6.50 mm] ribbon for Teddy Set Bib and  
Booties. 1 yard [.9 m] of ¼ inch [6.50  
mm] ribbon for Sweetheart Set Booties.

### GAUGE

14 sc and 16 rows = 4 ins [10 cm]

### INSTRUCTIONS

**Note:** • when working from chart, wind small balls of the colors to be used, one for each separate area of color in the design  
• start new colors at appropriate points.  
• to change colors, work until there are 2 loops on hook of last st before color change  
• draw next color through 2 loops and proceed.

#### BIB

With MC, ch 20.

**1st row:** (RS). 1 sc in 2nd ch from hook.  
1 sc in each ch to end of ch. Turn. 19 sts.

**2nd row:** Ch 1. 2 sc in first st. 1 sc in each  
st to last st. 2 sc in last st. Turn.

**3rd row:** Ch 1. 1 sc in each st to end of row.  
Turn.

**4th row:** As 2nd row. 23 sts.

**Bear Version: 5th row:** With MC, ch 1.  
1 sc in each of first 3 sts. Work 1st row of  
Bear Chart across next 17 sts. With MC,  
1 sc in each of last 3 sts. Turn. (See chart  
on page 10.)

Chart is now in position.

**Heart Version: 5th row:** With MC, ch 1.  
1 sc in each of first 2 sts. Work 1st row of  
Heart Chart across next 19 sts. With MC,  
1 sc in each of last 2 sts. Turn.

Chart is now in position.

**Both Versions: 6th row:** Ch 1. 2 sc in first  
st. Keeping cont of chart, work 1 sc in  
each st to last st. 2 sc in last st. Turn.

**7th row:** Keeping cont of chart, ch 1.  
Work 1 sc in each st to end of row. Turn.

**8th and 9th rows:** Rep last 2 rows once  
more. 27 sts.

Cont even, working chart of choice to end  
of chart. Break A.

With MC, cont even until work from beg  
measures 6½ ins [16.5 cm], ending with  
RS facing for next row.

**Shape neck: 1st row:** (RS). Ch 1. 1 sc in  
each of first 6 sts. *Yoh and draw up a loop  
in each of next 2 sts. Yoh and draw through  
all 3 loops on hook – sc2tog made. Turn.*  
Leave rem sts unworked.

**2nd row:** Ch 1. Sc2tog over first 2 sts.  
1 sc in each st to end of row. Turn.

**3rd row:** Ch 1. 1 sc in each st to last 2 sts.  
Sc2tog over last 2 sts. Turn. 5 sts.

Work 10 rows even.

**Next row:** (WS). Ch 1. 2 sc in first st. Pat  
to last 2 sts. Sc2tog. Turn.

**Next row:** Ch 1. Sc2tog. 1 sc in each st to  
last st. 2 sc in last st. Turn.

Rep last 2 rows twice more. Fasten off.

With RS of work facing, miss next 11 sts.  
Join MC with sl st to next st. Ch 1. Sc2tog  
over this st and next st. 1 sc in each st to  
end of row. Turn.

Work to correspond to first side, reversing  
all shapings.

**Edging:** Join A with sl st to top left corner of neck edge. Ch 1. 1 sc in same sp as last ss. Work 1 row sc evenly around all edges. Join MC with sl st to first sc.

**Next row:** With MC, working around outer edge only, ch 1. \*1 sc in next sc. Ch 1. Miss next sc. Rep from \* to last st. 1 sc in last st. Fasten off.

**Next row:** With RS of work facing, join A with sl st to first st of last row. Ch 1. Miss first st. \*1 sc in next st below ch 1 sp. Ch 1. Miss next st. Rep from \* ending with 1 sc in last sc. Fasten off. With A, make button loop at center back on left side. Sew button in position.

**Bear Version:** Cut 7 ins [18 cm] length of ribbon. Tie around bear's neck in bow as illustrated. Stitch securely in position on WS. With MC, embroider face as illustrated.

## BOOTIES

With A, ch 28. Join in rnd with sl st in first ch.

**1st rnd:** Ch 1. 1 sc in each ch around. Join MC with sl st to first sc. 28 sc.

**2nd rnd:** With MC, ch 1. 1 sc in same sp as last ss. \*Ch 1. Miss next sc. 1 sc in next sc. Rep from \* around ending with ch 1. Miss last sc. Join A with sl st to first sc.

**3rd rnd:** With A, ch 2. Miss first sc (where last ss was worked). \*1 sc in sc from 1st rnd below next ch 1 sp. Ch 1. Miss next sc. Rep from \* around, ending with 1 sc in sc from 1st rnd below last ch-1 sp. Join with sl st to first ch of ch 2.

**4th rnd:** Ch 1. 1 sc in same sp as last sl st. \*1 sc in next sc. 1 sc in next ch 1 sp. Rep from \* around ending with 1 sc in last sc. Join MC with sl st to first sc.

**5th to 7th rnds:** With MC, ch 1. 1 sc in each sc around. Join with sl st to first sc.

**8th rnd: (Eyelet rnd).** 1 sc in each of first 2 sts. \*Ch 1. Miss next st. 1 sc in each of next 2 sts. Rep from \* to last 2 sts. 1 sc in each of last 2 sts. Join with sl st to first sc.

**9th rnd:** Ch 1. (1 sc in each of next 3 sts. Sc2tog. 1 sc in each of next 4 sts. Sc2tog) twice. 1 sc in each of next 3 sts. Sc2tog. 1 sc in each st to end of rnd. Join with sl st to first sc. Fasten off. 23 sc.

**Instep: 1st row:** With RS of work facing, miss first 7 sts. Join MC with sl st to next st. Ch 1. 1 sc in same sp. 1 sc in each of next 8 sts. Turn. 9 sts.

**2nd to 4th rows:** Ch 1. 1 sc in each st to end of row. Turn.

**5th row:** Ch 1. Sc2tog. 1 sc in each of next 5 sts. Sc2tog. Turn.

**6th row:** Ch 1. Sc2tog. 1 sc in each of next 3 sts. Sc2tog. Fasten off.

With RS of work facing, join MC with sl st at center back. Ch 1. 1 sc in each of next 7 sts. Work 5 sc down side of instep. 3 sc in corner sc. 3 sc across end of instep. 3 sc in corner sc. Work 5 sc along other side of instep. 1 sc in each of next 7 sts. Join with sl st to first st. 33 sts.

**Next rnd:** Ch 1. 1 sc in each st around. Join with sl st to first st.

**Next rnd:** Ch 1. 1 sc in each st around. Join A with sl st to first st.

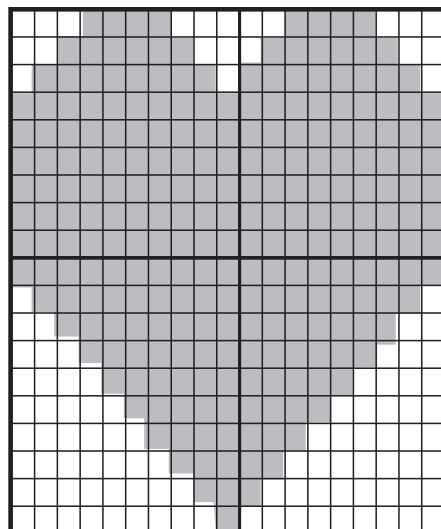
**Next rnd:** With A, ch 1. Working in back loops only, work 1 sc in each st around. Join with sl st to first st.

**Next rnd:** Ch 1. Sc2tog. 1 sc in each of next 12 sts. Sc2tog. 1 sc in next st. Sc2tog. 1 sc in each of next 12 sts. Sc2tog. Join with sl st to first st.

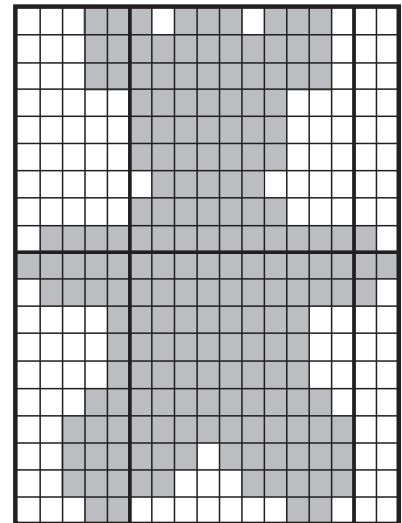
**Next rnd:** Ch 1. Sc2tog. 1 sc in each of next 10 sts. Sc2tog. 1 sc in next st. Sc2tog. 1 sc in each of next 10 sts. Sc2tog. Join with sl st to first st.

**Next rnd:** Ch 1. Sc2tog. 1 sc in each of next 8 sts. Sc2tog. 1 sc in next st. Sc2tog. 1 sc in each of next 8 sts. Sc2tog. Join with sl st to first st. Fasten off. Join center foot seam. Weave ribbon through eyelet row.

Heart Chart



Bear Chart



Key □ = MC ■ = A

## ABBREVIATIONS

[www.sugarcncream.com/glossary](http://www.sugarcncream.com/glossary)

