



**LILY® SUGAR'N CREAM®
ON THE SIDE TOTE (TO CROCHET)**

MEASUREMENTS

Approx 16" x 17" [40.5 x 43 cm].

MATERIALS

Lily® Sugar'n Cream® (70.9 g/2.5 oz; 109 m/120 yds)

Contrast A Hot Blue (01742)	2 balls	215 m/235 yds
Contrast B Hot Orange (01628)	2 balls	200 m/220 yds
Contrast C Hot Green (01712)	2 balls	210 m/230 yds

Size 5 mm (U.S. H/8) crochet hook **or size needed to obtain gauge.**

GAUGE

13 sc and 14 rows = 4" [10 cm].

ABBREVIATIONS

www.sugarncream.com/abbreviations

Approx = Approximately	RS = Right side
Beg = Beginning	Sc = Single crochet
Ch = Chain	Sp(s) = Space(s)
Cont = Continue(ity)	St(s) = Stitch(es)
Dc = Double crochet	Tog = Together
Pat = Pattern	WS = wrong side
Rem = Remain(ing)	Yoh = Yarn over the hook
Rep = Repeat	

INSTRUCTIONS

Stripe Pat: Work 1 row of each color: A, B, C. These 3 rows form Stripe Pat.

Note: Do not break color at end of row. Carry color not in use loosely up side of work.

First Section: (See Diagram on page 2) With A, ch 26.

1st row: (RS). 1 sc in 2nd ch from hook. *Ch 1. Miss next ch. 1 sc in next ch. Rep from * to end of chain. Join B. Turn. 25 sts.

2nd row: With B, ch 2. 1 dc in next ch-1 sp - counts as beg dc2tog. *Yoh and draw up a loop in same ch-1 sp as last st. Yoh and draw through 2 loops on hook. Yoh and draw up a loop in next ch-1 sp. Yoh and draw through 2 loops on hook. Yoh and draw through all 3 loops on hook - dc2tog made. Ch 1. Rep from * to last sc. Dc2tog over last worked ch-1 sp and last sc. Join C. Turn.

3rd row: With C, ch 1. 1 sc in first st. *1 sc in next ch-1 sp. Ch 1. Miss next st. Rep from * to last ch-1 sp. 1 sc in last ch-1 sp. 1 sc in last st. Join A. Turn.

4th row: With A, ch 3 (counts as dc). Dc2tog over first st and next ch-1 sp. *Ch 1. Miss next sc. Dc2tog over last worked ch-1 sp and next ch-1 sp. Rep from * to last sc. Dc2tog over last worked ch-1 sp and last sc. 1 dc in last sc. Join B. Turn.

5th row: With B, ch 1. 1 sc in first st. *Ch 1. Miss next st. 1 sc in next ch-1 sp. Rep from * to last 2 sts. Ch 1. Miss next st. 1 sc in last st. Join C. Turn. 2nd to 5th rows form Zig-Zag pat.

Keeping cont of Stripe Pat, rep last 4 rows until work from beg measures approx 6" [15 cm], ending on a 5th row. Fasten off.

Second Section: 1st row: (WS). With appropriate color, ch 25. With WS facing, pat across 25 sts of First Section. Ch 26. Join next color. Turn.

2nd row: 1 sc in 2nd ch from hook. *1 sc in next ch-1 sp. Ch 1. Miss next ch. Rep from * to last ch. 1 sc in last ch. **Ch 1. Miss next st. 1 sc in next ch-1 sp. Rep from ** to last st of First Section. Ch 1. Miss last st. ***1 sc in next ch. Ch 1. Miss next ch. Rep from *** to last ch. 1 sc in last ch. Join next color. Turn. 75 sts.

Beg with 4th row of Zig-Zag pat, work for next 6" [15 cm], ending on a 5th row.



P.O. Box 40 Listowel ON N4W 3H3

Third Section: 1st row: (WS). Pat across 75 sts of Second Section. Ch 51. Join next color. Turn.

2nd row: 1 sc in 2nd ch from hook. *1 sc in next ch-1 sp. Ch 1. Miss next ch. Rep from * to last ch. 1 sc in last ch. **Ch 1. Miss next st. 1 sc in next ch-1 sp. Rep from ** to last ch-1 sp. 1 sc in last ch-1 sp. 1 sc in last st. Join next color. Turn.

Beg with 4th row of Zig-Zag pat, work for next 6" [15 cm], ending on a 4th row.

Fourth Section: 1st row: (RS). Ch 1. 1 sc in first st. (Ch 1. Miss next st. 1 sc in next ch-1 sp) 36 times. Ch 1. Miss next st. 1 sc in last st. **Turn.** Leave rem sts unworked. Beg with 2nd row of Zig-Zag pat, work for next 6" [15 cm], ending on a 4th row. Fasten off.

Fifth Section: 1st row: (RS). Miss first 25 sts (ch-1 sps and dc2tog). Join appropriate color in next dc2tog. Ch 1. 1 sc in same sp as sl st. (1 sc in next ch-1 sp. Ch 1. Miss next st) 11 times. 1 sc in next ch-1 sp. 1 sc in next st. **Turn.** Leave rem sts unworked. Beg with 2nd row of Zig-Zag pat, work for next 6" [15 cm], ending on a 4th row. Fasten off. Sew corresponding sides. (See Assembly Diagram).

Opening edging: 1st rnd: With RS facing, join A with sl st to any outer corner. Ch 1. Work 18 sc along each side, having 3 sc in outer corners and sc2tog in inner corners. Join with sl st to first sc.
2nd rnd: As 1st rnd. Fasten off.

Straps: (Make 2).
 With A, ch 80.

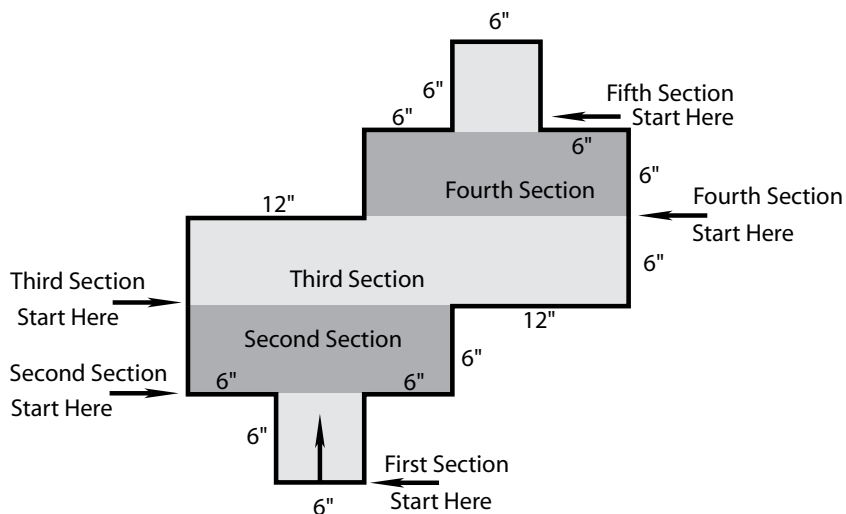
1st rnd: 1 dc in 4th ch from hook. 1 dc in each ch to end of ch. *Working into rem loops along opposite side of ch, work 1 dc in each ch to end of ch.* Ch 1. **Do not** fasten off.

Fold Strap in half with RS facing each other (WS of last rnd will show). Join Strap by working 1 sl st lengthwise through tops of corresponding dc and foundation ch to end of row. Fasten off.

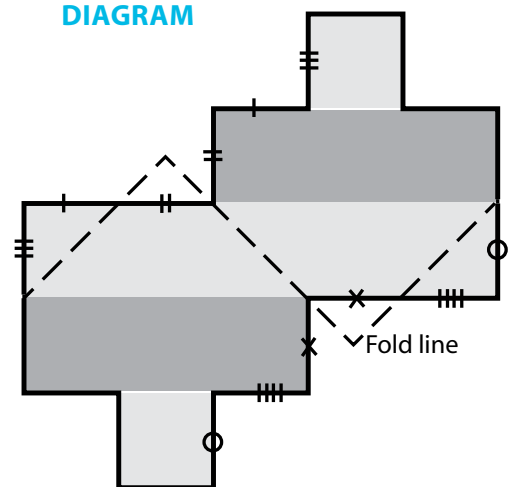
Sew Straps to WS at outer corners (see picture).



DIAGRAM



ASSEMBLY DIAGRAM



P.O. Box 40 Listowel ON N4W 3H3