



## Celtic Cables Wrap

FREE

X  INTERMEDIATE

SIMPLY SOFT  
HEATHER

DESCRIPTION    SIZING

Luxurious cables stand out against simple seed stitch.

### Abbreviations

**Alt** = alternate(ing)

**Approx** = approximately

**Beg** = beginning

**C6B** = Slip next 3 stitches onto cable needle and leave at back of work. K3, then K3 from cable needle.

**C6F** = Slip next 3 stitches onto cable needle and leave at front of work. K3, then K3 from cable needle.

**cont** = continue(ity)

**Dec** = decrease(ing)

**Inc** = Increase(ing)

**K** = knit

**P** = purl

**pat** = pattern

**rep** = repeat

**RS** = right side

**st(s)** = stitch(es)

**T6F** = Slip next 3 stitches onto a cable needle and leave at front of work. P3, then K3 from cable needle.

**T7B** = Slip next 4 stitches onto a cable needle and leave at back of work. K3, then (P1. K3) from cable needle.

**WS** = wrong side

### Details & Instructions

#### MEASUREMENTS

**Finished Measurements**

**Approx 14" x 60"**  
**[35.5 x 152.5 cm]**

#### MATERIALS

**Wrap**

**GAUGE**

18 sts and 24 rows = 4" [10 cm] in stocking st.

**INSTRUCTIONS**

**Cable Panel A** (worked over 23 sts. See Chart A graphic below)

**1st row:** (RS). (K3. P1) 5 times. K3.

**2nd and alt rows:** (P3. K1) 5 times. P3.

**3rd row:** As 1st row.

**5th row:** (K3. P1) twice. T7F. (P1. K3) twice.

**7th row:** As 1st row.

**9th row:** K3. (P1. T7B) twice. P1. K3.

**11th row:** As 1st row.

**13th row:** (T7F. P1) twice. T7F.

**15th row:** As 1st row.

**17th row:** As 9th row.

**19th row:** As 1st row.

**21st row:** As 5th row.

**22nd row:** As 2nd row.

These 22 rows form Cable Panel Pat A.

**Cable Panel B** (worked over 12 sts. See Chart B graphic below).

**1st and 3rd rows:** (RS). P3. K6. P3.

**2nd and alt rows:** K3. P6. K3.

**5th row:** P3. C6F. P3.

**6th row:** As 2nd row.

These 6 rows form Cable Panel B.

**Cable Panel C** (worked over 12 sts. See Chart C graphic below).

**1st and 3rd rows:** (RS). P3. K6. P3.

**2nd and alt rows:** K3. P6. K3.

**5th row:** P3. C6B. P3.

**6th row:** As 2nd row.

These 6 rows form Cable Panel C.

**INSTRUCTIONS**

Cast on 67 sts.

**\*\*1st row:** (RS). \*K3. P1. Rep from \* to last 3 sts. K3.

**2nd row:** \*P3. K1. Rep from \* to last 3 sts. P3.

Rep last 2 rows (P3. K1) ribbing until work from beg measures 8" [20 cm], ending on a 2nd row\*\* and inc 5 sts evenly across last row. 72 sts.

**Proceed as follows:**

**1st row:** K3. Work 1st row of Cable Panel B. Work 1st row of Cable Panel A. Work 1st row of Cable Panel C. (K1. P1) 9 times. K4.

**2nd row:** K3. (K1. P1) 9times. K1. Work 2nd row of Cable Panel C. Work 2nd row of Cable Panel A. Work 2nd row of Cable Panel B. K3.

**3rd row:** K3. Work 3rd row of Cable Panel B. Work 1st row of Cable Panel A. Work 3rd row of Cable Panel C. (K1. P1) 9 times. K4.

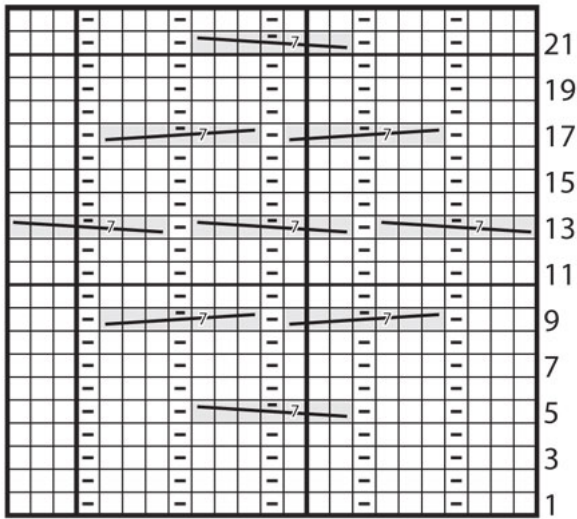
Cable Panels A, B, and C are now in position.

Cont in pat, having 3 sts garter st at each end until work from beg measures approx 52" [132 cm], ending on 2nd or 4th row of Cable Panel A, and dec 5 sts evenly across last row. 67 sts.

Work from \*\* to \*\* as given above.

Cast off in pat.

Chart A



Start Here

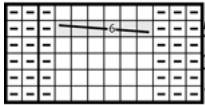
☐ = Knit on RS rows. Purl on WS rows

☒ = Purl on RS rows. Knit on WS rows

 = T7B

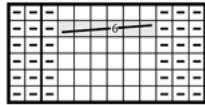
 = T7F

CHART B



start here

CHART C



start here

☐ = Knit on RS rows, purl on WS rows.

☒ = Purl on RS rows, knit on WS rows.

 = C6B

 = C6F