



MATERIALS

Bernat® Softee® Chunky™ (100 g/3.5 oz; 99 m/108 yds)							
Version 1	Sizes	4	6	8	10	12	
Main Color: Emerald (28200)		3	4	4	5	5	balls
Contrast A: White (28005)		1	1	1	1	1	ball
Contrast B: True Grey (28044)		1	1	1	1	1	ball
Contrast C: Glowing Gold (28607)		1	1	1	1	1	ball
Version 2							
Main Color: Grey Heather (28046)		3	4	4	5	5	balls
Contrast A: White (28005)		1	1	1	1	1	ball
Contrast B: Emerald (28200)		1	1	1	1	1	ball
Contrast C: Peony Pink (28417)		1	1	1	1	1	ball

Set of 4 sizes 6.5 mm (U.S. 10½) and 8 mm (U.S. 11) double-pointed knitting needles. Sizes 6.5 mm (U.S. 10½) and 8 mm (U.S. 11) circular knitting needles 24" [60 cm] long **or size needed to obtain gauge**. 2 stitch holders.

MEASUREMENTS

To fit chest measurement	
4	23" [58.5 cm]
6	25" [63.5 cm]
8	26½" [67.5 cm]
10	28" [71 cm]
12	30" [76 cm]
Finished chest	
4	27½" [70 cm]
6	29" [73.5 cm]
8	30½" [77.5 cm]
10	32¾" [83 cm]
12	36½" [92.5 cm]

ABBREVIATIONS

www.bernat.com/abbreviations

Beg = Beginning	P = Purl
Cont = Continue(ity)	Rep = Repeat
Dec = Decrease(ing)	Rnd(s) = Round(s)
Inc = Increase(ing)	Ssk = Slip next 2 stitches knitwise one at a time.
K = Knit	Pass them back onto left-hand needle, then knit through back loops together
K2tog = Knit next 2 stitches together	St(s) = Stitch(es)
M1 = Make 1 stitch by picking up horizontal loop lying before next stitch and knitting into back of loop	WS = Wrong side



GAUGE: 11 sts and 14 rows = 4" [10 cm] with larger needles in stocking st.

INSTRUCTIONS

The instructions are written for smallest size. If changes are necessary for larger sizes the instructions will be written thus (). Numbers for each size are shown in the same color throughout the pattern. When only one number is given in black, it applies to all sizes.

Note: Pullover is worked from the neck down.

With MC and smaller double-pointed needles, cast on **38 (40-42-46-48)** sts. Divide sts on 3 needles. Join in rnd, placing marker on first st.

1st rnd: *K1. P1. Rep from * around.

Rep last rnd of (K1. P1) ribbing for 1½" [4 cm].

Change to larger double-pointed needles.

Next rnd: *K**19 (10-7-23-6)**. M1. Rep from * around. **40 (44-48-48-56)** sts.

Knit 1 rnd even.

Size 10 only: Next rnd: *K12. M1. Rep from * around. 52 sts.

Knit 1 rnd even.

Size 12 only: Knit 2 rnds even.

YOKE

Note: When working from charts, carry yarn not in use loosely across WS of work, but never over more than 4 sts. When it must pass over more than 4 sts, weave it over and under center point of sts its being passed over. The colors are never twisted around one another.

Work Chart I in stocking st to end of chart, *reading rnds from right to left* and noting 2-st rep will be worked **20 (22-24-26-28)** times, changing to larger circular needle when necessary to accommodate sts. **120 (132-144-156-168)** sts after Chart I is complete. Break A, B, and C.
Knit **1 (1-1-2-3)** rnd(s) even.

Sizes 4, 6 and 8 only: Next rnd: *K15 (33-36). M1. Rep from * around. **128 (136-148)** sts.

All sizes: Divide for Body: Next rnd: (Dividing rnd). *Slip next **27 (29-33-34-36)** sts onto st holder for Sleeve. Cast on **1 (1-1-1-2)** st(s). K37 (39-41-44-48) for Body. Rep from * once more. **76 (80-84-90-100)** sts.

Knit even in rnds until work from dividing rnd measures **10 (11-11-15-16½)" [25.5 (28-33-38-42) cm]** for Version 1 or **15½ (16½-18½-20-21)" [39.5 (42-47-51-53.5) cm]** for Version 2.

Change to smaller circular needle and work 1½" [4 cm] in (K1. P1) ribbing. Cast off loosely in ribbing.

SLEEVES

With larger double-pointed needles, cast on **1 (1-1-1-2)** st(s). K27 (29-33-34-36) from st holder. Cast on **1 (1-1-1-2)** st(s). Join in rnd, placing marker on first st. **29 (31-35-36-40)** sts.

Version 1 only: Knit **4 (4-3-3-3)** rnds even.

Next rnd: K1. ssk. Knit to last 3 sts. K2tog. K1.

Rep last **5 (5-4-4-4)** rnds **4 (5-5-5-7)** times more. **19 (19-23-24-24)** sts.

All sizes: Knit even in rnds until Sleeve from dividing rnd measures **10½ (11½-12½-13-15)" [25.5 (29-32-33-38) cm]**.

Sizes 4, 6 and 8 only: Next rnd: Knit, dec 1 st at center. **18 (18-22)** sts.

All sizes: Change to smaller double-pointed needles and work 1½" [4 cm] in (K1. P1) ribbing. Cast off loosely in ribbing.

Version 2 only: Knit 3 rnds.

Change to smaller double-pointed needles.

Next rnd: Purl.

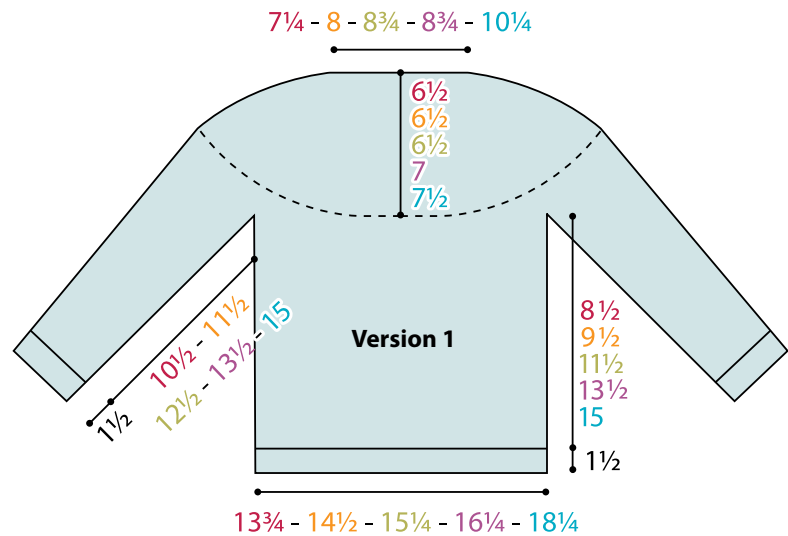
Next rnd: Knit.

Rep last 2 rnds (garter st) twice more.

Cast off loosely.

Both Versions: Finishing: Sew underarm seams.

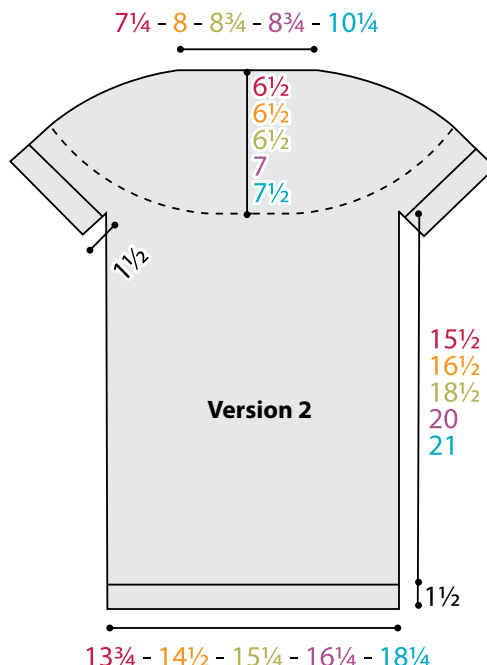
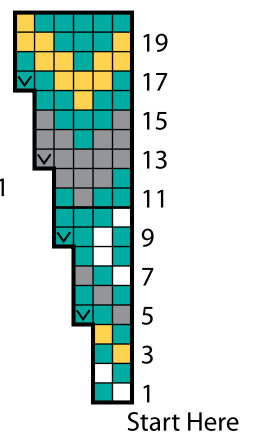
Finishing: Pin garment to measurements. Cover with a damp cloth, leaving cloth to dry.



Key

- = MC
- = A
- = B
- = C
- = With MC, M1
- = With B, M1

Version 1 Chart I



Version 2 Chart I

