

8

Big Aran Sweater and Earflap Hat



INTERMEDIATE

SIZES



Sweater

To fit bust measurement	
Extra-Small / Small	28-34 ins [71-86.5 cm]
Medium	36-38 ins [91.5-96.5 cm]
Large	40-42 ins [101.5-106.5 cm]
Extra-Large	44-46 ins [112-117 cm]
2/3 Extra-Large	48-54 ins [122-137 cm]
4/5 Extra-Large	56-62 ins [142-157.5 cm]

Finished bust	
Extra-Small / Small	39 ins [99 cm]
Medium	43 ins [109 cm]
Large	47 ins [119.5 cm]
Extra-Large	51 ins [129.5 cm]
2/3 Extra-Large	56 ins [142 cm]
4/5 Extra-Large	63 ins [160 cm]

Earflap Hat: To fit average lady's head.

MATERIALS

Patons® Classic Wool Roving (100 g/3.5 oz; 109 m/120 yds)							
SWEATER	XS/S	M	L	XL	2/3XL	4/5XL	
 77008 (Aran)	9	10	11	11	12	13	balls
 EARFLAP HAT: 77008 (Aran)	2 balls						
Sizes 5.5 mm (U.S. 9) and 6.5 mm (U.S. 10½) knitting needles or size needed to obtain tension. Cable needle. Size 5.5 mm (U.S. I or 9) crochet hook for Hat.							

TENSION

14 sts and 18 rows = 4 ins [10 cm] with larger needles in stocking st.



STITCH GLOSSARY

See page 66 for Helpful Hints.

Alt = Alternate(ing).

Approx = Approximately.

Beg = Beginning.

C6B = Slip next 3 stitches onto a cable needle and leave at back of work. K3, then K3 from cable needle.

C6F = Slip next 3 stitches onto a cable needle and leave at front of work. K3, then K3 from cable needle.

C8F = Slip next 4 stitches onto a cable needle and leave at front of work. K4, then K4 from cable needle.

Cr8B = Slip next 3 stitches onto a cable needle and leave at back of work. K5, then K3 from cable needle.

Cr8F = Slip next 5 stitches onto a cable needle and leave at front of work. K3, then K5 from cable needle.

Cont = Continue(ity).

Dec = Decrease(ing).

Inc = Increase 1 stitch by knitting into front and back of next stitch.

K = Knit.

K2tog = Knit next 2 stitches together.

M1P = Make 1 stitch by picking up horizontal loop lying before next stitch and purling into back of loop.

MB = [(K1. yo) twice. K1] all in next st. 5 sts. **Turn.** P5. **Turn.** ssk. K1. K2tog. **Turn.** P3. **Turn.** S11. K2tog. pssso. 1 stitch remains. Bobble complete.

P = Purl.

P2(3)tog = Purl next 2(3) stitches together.

P2togtbl = Purl next 2 stitches together through back loops.

Pat = Pattern.

Pssso = Pass slipped stitch over.

Rem = Remaining.

Rep = Repeat.

Rnd(s) = Round(s).

RS = Right side.

Sc = Single crochet.

Sl st = Slip stitch.

Ssk = Slip next 2 stitches knitwise one at a time. Pass them back onto left-hand needle, then knit through back loops together.

St(s) = Stitch(es).

T4B = Slip next stitch onto a cable needle and leave at back of work. K3, then P1 from cable needle.

T4F = Slip next 3 stitches onto a cable needle and leave at front of work. P1, then K3 from cable needle.

T6B = Slip next stitch onto a cable needle and leave at back of work. K5, then K1 from cable needle.

T6F = Slip next 5 stitches onto a cable needle and leave at front of work. K1, then K5 from cable needle.

T7B = Slip next 4 stitches onto a cable needle and leave at back of work. K3, then P1, K3 from cable needle.

Tog = Together.

WS = Wrong side.

Yo = Yarn over.

INSTRUCTIONS

The instructions are written for smallest size. If changes are necessary for larger sizes the instructions will be written thus (). Numbers for each size are shown in the same color throughout the pattern. When only one number is given in black, it applies to all sizes.

PANEL PAT A (worked over 15 sts).

(See chart on page 64).

1st row: (RS). P8. T4B. P3.

2nd, 4th, 6th, 8th and 10th rows: Knit all knit sts and purl all purl sts as they appear.

3rd row: P7. T4B. P4

5th row: P6. T4B. P5

7th row: P5. T4B. P6.

9th row: P4. T4B. P7.
11th row: P3. T4B. P8.
12th row: K2. P3. K4. P3. K3.
13th row: P2. T4B. P4. K3. P2.
14th row: K2. P3. K5. P3. K2.
15th row: P2. K3. P2. MB. P2. K3. P2.
16th row: As 14th row.
17th row: P2. T4F. P3. T4B. P2.
18th row: (K3. P3) twice. K3.
19th row: P3. T4F. P1. T4B. P3.
20th row: K4. P3. K1. P3. K4.
21st row: P4. T7B. P4.
22nd row: As 20th row.
23rd row: P3. T4B. P1. T4F. P3.
24th row: As 18th row.
25th row: P2. T4B. P3. T4F. P2.
26th row: As 14th row.
27th row: As 15th row.
28th row: As 14th row.
29th row: P9. T4B. P2.
30th row: K3. P3. K9.

These 30 rows form Panel Pat A.

Panel Pat B (worked over 8 sts).

(See chart on page 64).

1st row: (RS). K8.
2nd row: P8.
3rd to 10th rows: As 1st and 2nd rows
 4 times.
11th row: C8F.
12th row: P8.

These 12 rows form Panel Pat B.

Panel Pat C (worked over 32 sts).

(See chart on page 64).

1st row: (RS). K15. P2. K15.
2nd and alt rows: Knit all knit sts and purl
 all purl sts as they appear.
3rd row: As 1st row.
5th row: K9. C6F. P2. C6B. K9.
7th to 24th rows: As 1st to 6th rows
 3 times more.
25th row: As 1st row.
27th row: T6F. K9. P2. K9. T6B.
29th row: K1. T6F. K2. C6F. P2. C6B. K2.
 T6B. K1.
31st row: K2. T6F. K7. P2. K7. T6B. K2.
33rd row: K3. T6F. K6. P2. K6. T6B. K3.
35th row: K4. T6F. K5. P2. K5. T6B. K4.
37th row: K5. T6F. K4. P2. K4. T6B. K5.
39th row: K6. T6F. K3. P2. K3. T6B. K6.
41st row: K7. Cr8F. P2. Cr8B. K7.
42nd row: As 2nd row.

These 42 rows form Panel Pat C.

SWEATER

BACK

With smaller needles, cast on **82 (90-98-106-114-130) sts.

1st row: (RS). K2. *P2. K2. Rep from * to end
 of row.

2nd row: P2. *K2. P2. Rep from * to end of
 row.

Rep last 2 rows of (K2. P2) ribbing until
 work from beg measures 3 ins [7.5 cm],
 ending with a 2nd row and inc **8 (8-8-10-
 12-14)** sts evenly across last row. **90
 (98-106-116-126-144)** sts.

Sizes XS/S, M, L and XL only: Change to larger needles and proceed in pat as follows:

1st row: (RS). K0 (4-8-13). P2. Work 1st row of Panel Pat A. P2. Work 1st row of Panel Pat B. P2. Work 1st row of Panel Pat C. P2. Work 1st row of Panel Pat B. P2. Work 1st row of Panel Pat A. P2. K0 (4-8-13).

2nd row: P0 (4-8-13). K2. Work 2nd row of Panel Pat A. K2. Work 2nd row of Panel Pat B. K2. Work 2nd row of Panel Pat C. K2. Work 2nd row of Panel Pat B. K2. Work 2nd row of Panel Pat A. K2. P0 (4-8-13).

Last 2 rows form pat. Panel Pats A, B and C are now in position.

Sizes 2/3XL and 4/5XL only: 1st row: (RS). K(14-23). P4. Work 1st row of Panel Pat A. P4. Work 1st row of Panel Pat B. P4. Work 1st row of Panel Pat C. P4. Work 1st row of Panel Pat B. P4. Work 1st row of Panel Pat A. K(14-23).

2nd row: P(14-23). K4. Work 2nd row of Panel Pat A. K4. Work 2nd row of Panel Pat B. K4. Work 2nd row of Panel Pat C. K4. Work 2nd row of Panel Pat B. K4. Work 2nd row of Panel Pat A. P(14-23).

Last 2 rows form pat. Panel Pats A, B and C are now in position.

All sizes: Cont in pat, keeping cont of Panel Pats A, B and C until work from beg measures 20 ins [51 cm], ending with a WS row.



Shape armholes: Cast off 5 (5-6-6-9-11) sts beg next 2 rows. 80 (88-94-104-108-122) sts rem.

Dec 1 st each end of needle on next 3 (5-5-7-7-11) rows, then every following alt row to 62 (66-72-78-82-88) sts rem.**

Cont even in pat until armholes measure 8 (8½-8½-9-9½-10) ins [20.5 (21.5-21.5-23-24-25.5) cm], ending with a WS row.



Shape back neck and shoulders: 1st row:

(RS). Pat **14 (16-17-20-20-23)** sts. K2tog.

Turn. Leave rem sts on a spare needle.

2nd row: P2tog. Pat to end of row.

3rd row: Cast off **7 (8-8-10-10-11)** sts. Pat to last 2 sts. K2tog.

4th row: Work in pat.

Cast off rem **6 (7-8-9-9-11)** sts.

With RS of work facing, cast off next **30 (30-34-34-38-38)** sts. Join yarn to rem sts and proceed as follows:

1st row: ssk. Pat to end of row.

2nd row: Cast off **7 (8-8-10-10-11)** sts. Pat to last 2 sts. P2togtbl.

3rd row: As 1st row.

Cast off rem **6 (7-8-9-9-11)** sts.

FRONT

Work from ** to ** as given for Back.

Cont even in pat until armholes measure **4 (4½-5-5½-6-6)** ins [**10 (11.5-12.5-14-15-15)** cm], ending with a WS row.

Shape neck: 1st row: (RS). Pat **20 (22-23-26-26-29)** sts. **Turn.** Leave rem sts on a spare needle.

Dec 1 st at neck edge on next **3 (3-3-3-5-5)** rows, then every following alt row to **13 (15-16-19-19-22)** sts.

Cont even in pat until armhole measures same length as Back before shoulder shaping, ending with a WS row.

Shape shoulder: Keeping cont of pat, cast off **7 (8-8-10-10-11)** sts beg next row. Work 1 row even. Cast off rem **6 (7-8-9-9-11)** sts.

With RS of work facing, cast off next **22 (22-26-26-30-30)** sts. Join yarn to rem sts and pat to end of row.

Dec 1 st at neck edge on next **3 (3-3-3-5-5)** rows, then every following alt row to **13 (15-16-19-19-22)** sts.

Cont even in pat until armhole measures same length as Back before shoulder shaping, ending with a RS row.

Shape shoulder: Keeping cont of pat, cast off **7 (8-8-10-10-11)** sts beg next row. Work 1 row even. Cast off rem **6 (7-8-9-9-11)** sts.

SLEEVES

With smaller needles, cast on **42 (42-42-42-46-46)** sts.

Work 5 ins [12.5 cm] in (K2. P2) ribbing as given for Back, inc 8 sts evenly across last row **50 (50-50-50-54-54)** sts.

Change to larger needles and proceed in pat as follows:

1st row: (RS). P9 (**9-9-9-11-11**). Work 1st row of Panel Pat C. P9 (**9-9-9-11-11**).

2nd row: K9 (**9-9-9-11-11**). Work 2nd row of Panel Pat C. K9 (**9-9-9-11-11**).

Last 2 rows form pat. Panel Pat C is now in position.

Cont in pat, keeping cont of Panel Pat C, inc 1 st each end of needle on next and every following **6th (4th-4th-4th-2nd-2nd)** row to **62 (54-66-76-74-90)** sts, then every following **8th (6th-6th-6th-4th-4th)** row to **68 (72-76-80-90-98)** sts, taking inc sts into reverse stocking st.

Cont even in pat until work from beg measures **18 (18-18½-18½-17-16½)** ins [**45.5 (45.5-47-47-43-42)** cm], ending with a WS row.

Shape top: Cast off **2 (2-2-3-3-4)** sts beg next 2 rows. **64 (68-72-74-84-90)** sts rem.

Dec 1 st each end of needle on next and every following alt row **6 (8-9-10-11-10)** times more. **50 (50-52-52-60-68)** sts.

Cast off 3 sts beg next **6 (6-6-6-8-10)** rows, then cast off 4 sts beg following 2 rows. Cast off rem **24 (24-26-26-28-30)** sts.

FINISHING

Pin all pieces to measurements. Cover with a damp cloth, leaving cloth to dry. Sew right shoulder seam.

Cowl Collar: With larger needles, cast on 35 sts.

Work in garter st (knit every row) until work measures length to fit around neck edge, ending with a WS row. Sew Collar in position as you work. Cast off.

Sew left shoulder and collar seam, reversing 5 ins [12.5 cm] for turnback. Sew in sleeves. Sew side and sleeve seams.

Twisted Cord: Cut 3 strands of yarn 80 ins [203 cm] long. With all strands tog, hold one end and with someone holding other end, twist strands to the right until they begin to curl. Fold the 2 ends tog and tie in a knot so they will not unravel. The strands will now twist themselves tog. (See diagram on page 63).

Pom-pom: (Make 2). Wind yarn around 2 fingers approx 60 times. Remove from fingers and tie tightly in center. Cut through each side of loops. Trim to a smooth round shape. (See diagram on page 63).

Fold Collar to RS. Thread twisted cord through Collar as shown in picture. Tie at front. Attach pom-poms to each end of twisted cord.

EARFLAP HAT

First earflap: With smaller needles, cast on 8 sts.

1st row: (RS). K1. M1P. P2. T4B. M1P. K1. 10 sts.

2nd, 4th, 6th and 8th rows: K1. Knit all knit sts and purl all purl sts as they appear to last st. K1.

3rd row: K1. M1P. P2. T4B. P2. M1P. K1. 12 sts.

5th row: K1. M1P. P2. T4B. P4. M1P. K1. 14 sts.

7th row: K1. M1P. P2. T4B. P6. M1P. K1. 16 sts.

9th row: K1. M1P. P2. T4B. P8. M1P. K1. 18 sts.

10th row: (K4. P3) twice. K4.

11th row: K1. M1P. P2. T4B. P4. K3. P3. M1P. K1. 20 sts.

12th row: (K5. P3) twice. K4.

13th row: K1. M1P. P3. K3. P2. MB. P2. K3. P4. K1. 21 sts.

14th and alt rows: As 2nd row.

15th row: K1. P4. T4F. P3. T4B. P4. K1.

17th row: K1. P5. T4F. P1. T4B. P5. K1.

19th row: K1. P6. T7B. P6. K1.

21st row: K1. P5. T4B. P1. T4F. P5. K1.

23rd row: K1. P4. T4B. P3. T4F. P4. K1.

25th row: K1. P4. K3. P2. MB. P2. K3. P4. K1.

26th row: (K5. P3) twice. K5.

27th row: K1. P11. T4B. P4. K1. Break yarn.

Second earflap: Work as given for First earflap. **Do not** break yarn.

Joining row: (WS). Cast on 5 sts. Knit these 5 sts. Pat across 21 sts from Second earflap.

Turn. Cast on 32 sts. **Turn.** Pat across 21 sts from First earflap. **Turn.** Cast on 5 sts. 84 sts.



2nd row: P8. Work 1st row of Panel Pat A. P3. Work 1st row of Panel Pat C. P3. Work 1st row of Panel Pat A. P8.

3rd row: K8. Work 2nd row of Panel Pat A. K3. Work 2nd row of Panel Pat C. K3. Work 2nd row of Panel Pat A. K8.

Panel Pats A and C are now in position.

Cont in pat, keeping cont of Panel Pats A and C until work from joining row measures approx 5 ins [12.5 cm], ending with 22nd row of Panel Pat C.

Shape top: 1st row: (RS). P2tog. P4. P2tog. Work appropriate row of Panel Pat A. P3tog. Work appropriate row of Panel Pat C. P3tog. Work appropriate row of Panel Pat A. P2tog. P4. P2tog. 76 sts.

2nd row: K6. Work appropriate row of Panel Pat A. K1. Work appropriate row of Panel Pat C. K1. Work 2nd row of Panel Pat A. K6.

3rd row: (P2tog. P2) twice. T4B. P3. T4F. P3tog. Work appropriate row of Panel Pat C. P3tog. T4B. P3. T4F. (P2. P2tog) twice. 68 sts.

4th row: K6. P3. K9. P15. K2. P15. K1. P3. K14.

5th row: P2tog. P2. P2tog. P5. MB. P2. K3. P1. T6F. K7. K2tog. P2. ssk. K7. T6B. P2tog. P4. MB. P2. K3. P2tog. P2. P2tog. 61 sts.

6th row: K4. P3. K8. P14. K2. P14. K1. P3. K12.

7th row: (P2. P2tog) twice. P3. T4B. P1. K1. T6F. K1. C6F. P2tog. C6B. K1. T6B. K1. P2tog. P2. P2tog. P1. T4B. P2tog. P2. 55 sts.

8th row: K4. P3. K5. P14. K1. P14. K2. P3. K9.

9th row: (P1. P2tog) twice. P2. T4B. P2tog. K2. T6F. K4. K2tog. P1. ssk. K4. T6B. K2. P2tog. P2. T4B. P2tog. P2. 48 sts.

10th row: K4. P3. K3. P13. K1. P13. K2. P3. K6.

11th row: P1. P2tog. P2. T4B. P2tog. K3. T6F. K2. K2tog. P1. ssk. K2. T6B. K3. P2tog. T4B. P2tog. P2. 42 sts.

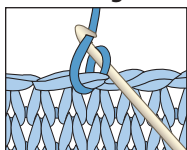
12th row: K4. P3. K1. P12. K1. P12. K2. P3. K4.

13th row: (P2tog) twice. K2tog. K1. P2tog. (K2tog) 6 times. P1. (K2tog) 6 times. P1. K1. K2tog. (P2tog) twice. 23 sts.

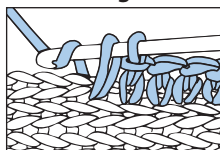
Break yarn leaving a long end. Draw end tightly through rem sts and fasten securely. Sew back seam.

With crochet hook, join yarn with sl st at back seam. Ch 1. Work 1 rnd of sc around bottom edge and earflaps of Hat. Join with sl st to first sc. Fasten off.

Sl st Diagram

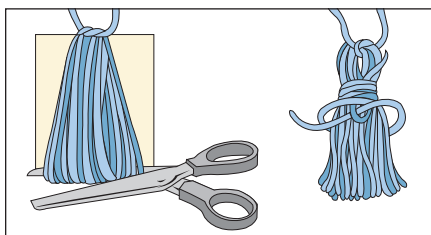


Sc Diagram



Tassels: (make 2). Cut a piece of cardboard 3 ins [7.5 cm] wide. Wind yarn around cardboard 15 times. Break yarn, leaving a long end and thread end through a needle. Slip needle through all loops and tie tightly. Remove cardboard and wind yarn tightly around loops $\frac{3}{4}$ inch [2 cm] below fold. Fasten securely. Cut through rem loops and trim ends evenly. Sew one tassel to each earflap.

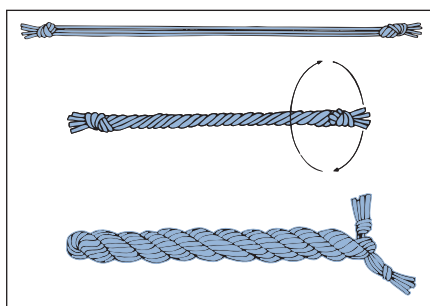
Tassel Diagram



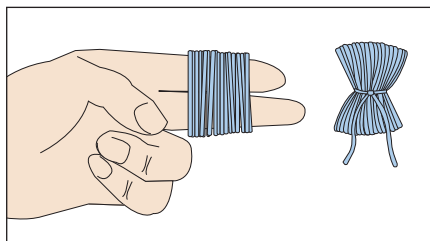
Twisted Cord: Cut 5 strands of yarn 15 ins [38 cm] long. With all strands tog, hold one end and with someone holding other end, twist strands to the right until they begin to curl. Fold the 2 ends tog and tie in a knot so they will not unravel. The strands will now twist themselves tog. Trim one end.

Sew twisted cord to top of Hat. 🧶

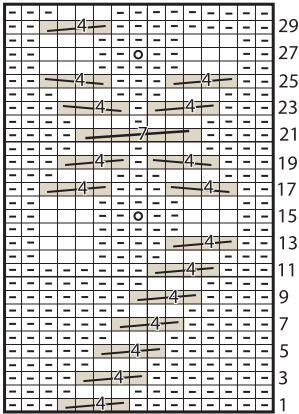
Twisted Cord



Pom-Pom



Panel Pat A



Start Here

Key

□ = Knit on RS rows,
purl on WS rows.

▢ = Purl on RS rows,
knit on WS rows.

○ = MB

= T4B

= T4F

= C6B

= C6F

= T6B

= T6F

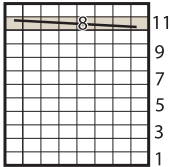
= T7B

= C8F

= Cr8B

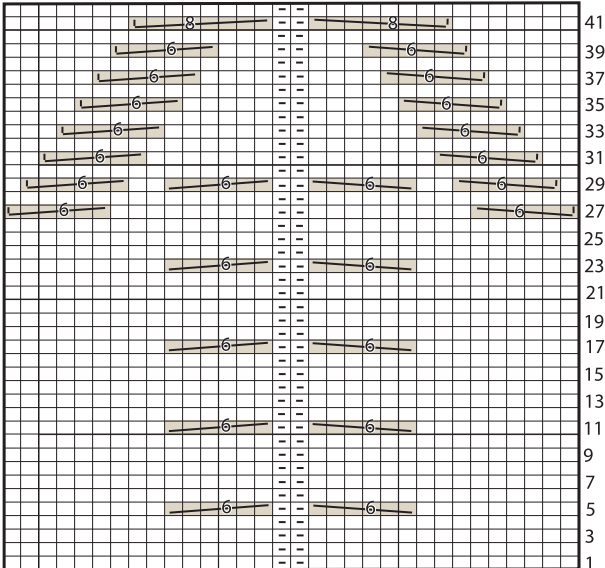
= Cr8F

Panel Pat B



Start Here

Panel Pat C



Start Here

